

Dallas County, Iowa

Horizontal Datum: **NAD 83(NA2011)** - Vertical Datum: **NAVD 1988**
Iowa State Plane South Zone (1402)
Iowa Regional Coordinate System, Zone 8, Ames-Des Moines TM
US Survey Feet
2018

Point Name: **114**

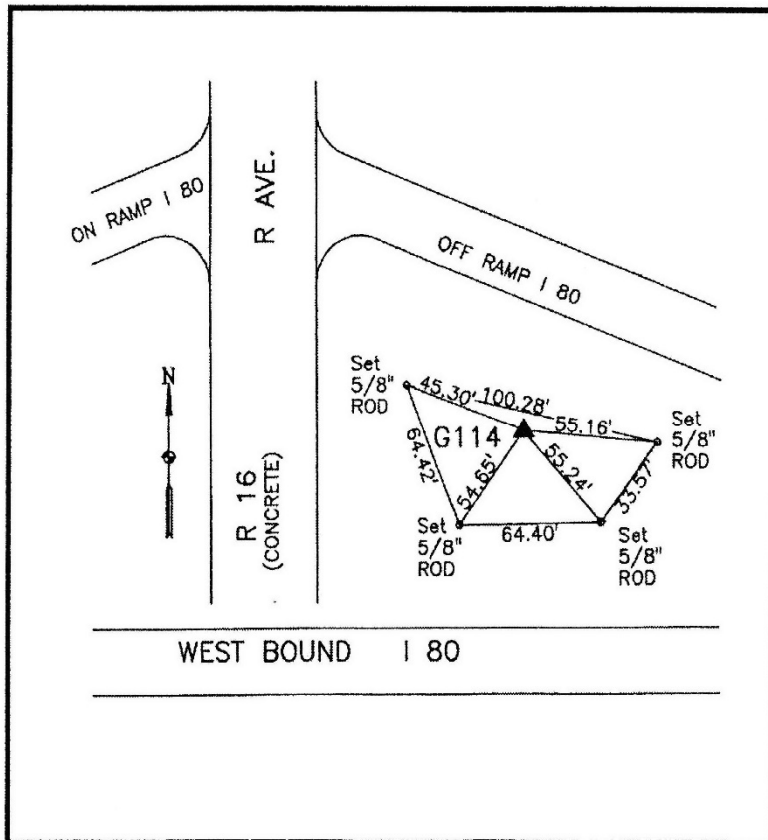
Designation: G114 (set by WHKS in 2001)

NAD 83(NA2011) Latitude: **N41°32'55.31126"** Longitude: **W93°57'09.46132"**
NAVD 88 Ortho Height: **959.402sft** Ellip. Ht: **858.787sft** **Geoid12B**

Iowa South Zone (1402) Northing: **564570.638sft** Easting: **1516522.673sft**
Mapping Angle: **-0°17'53"** Combination Scale Factor: **0.99992578**

IaRCS Zone 8 Northing: **7473275.208sft** Easting: **18435407.710sft**
Mapping Angle: **-0°09'23"** Combination Scale Factor: **0.99999679**

Monument Type: 5/8" dia. x 6'-0" long alum. rod with cap and NGS style access cover.



Description:

Placed 5/8" X 6' - 0" Long
Aluminum Rod with Cap
Stamped G114 and NGS Style
Access Cover 3 " Deep.

Location:

South side west bound off
ramp at I-80 interchange
number 113 with R Avenue
(R16). Monument location is on
top of hill.