

**Dallas County, Iowa**

Horizontal Datum: **NAD 83(NA2011)** - Vertical Datum: **NAVD 1988**  
Iowa State Plane South Zone (1402)  
Iowa Regional Coordinate System, Zone 8, Ames-Des Moines TM  
US Survey Feet  
**2018**

Point Name: **115**

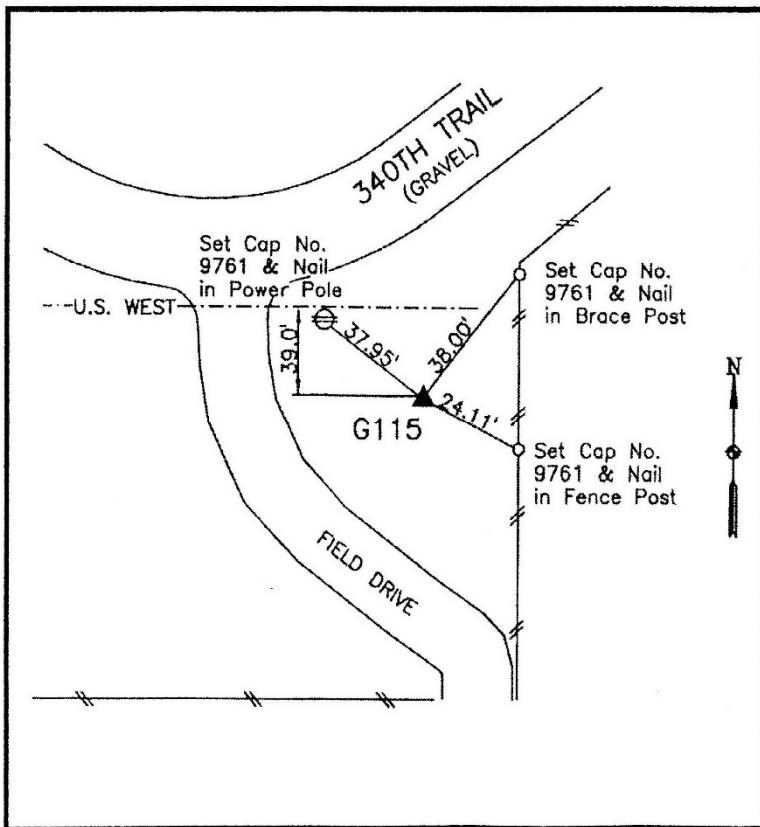
**Designation:** G115 (set by WHKS in 2001)

NAD 83(NA2011) Latitude: **N41°32'46.88435"** Longitude: **W93°53'49.28611"**  
NAVD 88 Ortho Height: **1017.980sft** Ellip. Ht: **916.898sft** **Geoid12B**

**Iowa South Zone (1402)** Northing: **563643.387sft** Easting: **1531738.731sft**  
Mapping Angle: **-0°15'41"** Combination Scale Factor: **0.99992276**

**IaRCS Zone 8** Northing: **7472385.549sft** Easting: **18450627.083sft**  
Mapping Angle: **-0°07'11"** Combination Scale Factor: **0.99999203**

**Monument Type:** 5/8" dia. x 6'-0" long alum. rod with cap and NGS style access cover.



**Description:**

Placed 5/8" X 6' - 0" Long  
Aluminum Rod with Cap  
Stamped G115 and NGS Style  
Access Cover 4 " Deep.

**Location:**

South side intersection of  
340th Trail (F64) and U Lane  
where county road right of way  
widens. West of north-south  
fence.