

Dallas County, Iowa

Horizontal Datum: **NAD 83(NA2011)** - Vertical Datum: **NAVD 1988**

Iowa State Plane South Zone (1402)

Iowa Regional Coordinate System, Zone 8, Ames-Des Moines TM

US Survey Feet

2018

Point Name: **116**

Designation: G116 (set by WHKS in 2001)

NAD 83(NA2011) Latitude: **N41°33'27.35122"** Longitude: **W93°50'59.62621"**

NAVD 88 Ortho Height: **875.760sft** Ellip. Ht: **774.392sft** **Geoid12B**

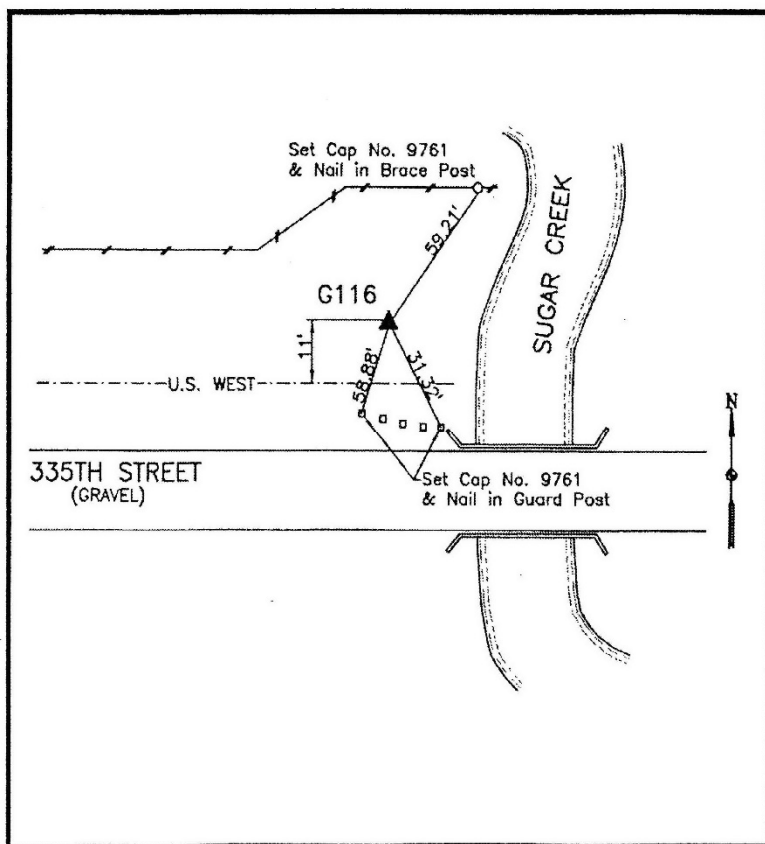
Iowa South Zone (1402) Northing: **567683.803sft** Easting: **1544655.480sft**

Mapping Angle: **-0°13'50"** Combination Scale Factor: **0.99993076**

IaRCS Zone 8 Northing: **7476458.241sft** Easting: **18463534.656sft**

Mapping Angle: **-0°05'18"** Combination Scale Factor: **0.99999757**

Monument Type: 5/8" dia. x 6'-0" long alum. rod with cap and NGS style access cover.



Description:

Placed 5/8" X 6' - 0" Long Aluminum Rod with Cap Stamped G116 and NGS Style Access Cover 3" Deep.

Location:

North side 335th Street in top northwest wind dam at bridge over Sugar Creek.

This document was prepared by Dan Corbin, Inc. on March 9, 2018 for Dallas County, Iowa.