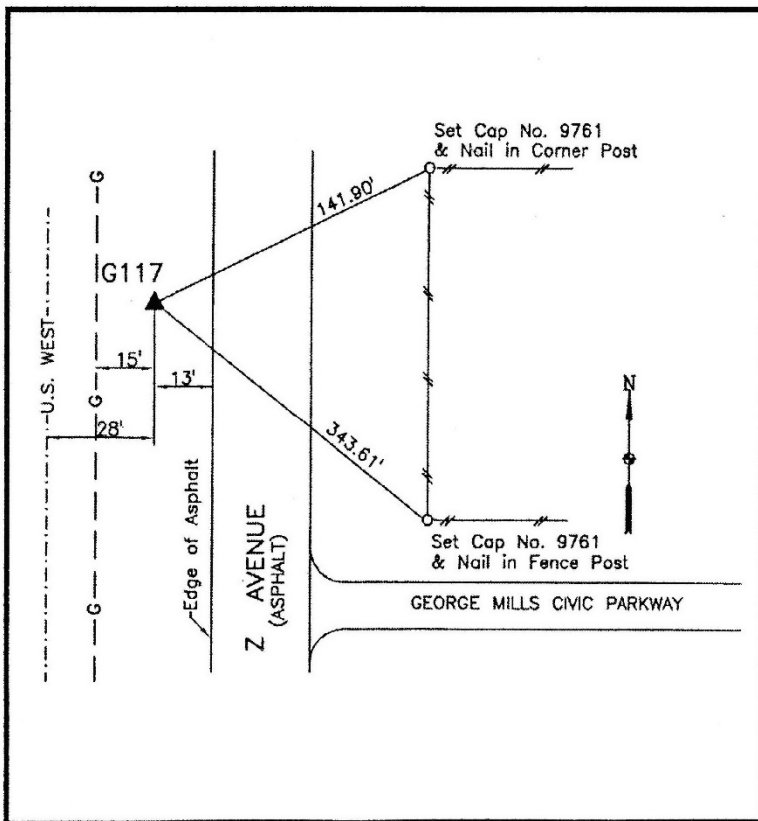


Dallas County, Iowa

Horizontal Datum: **NAD 83(NA2011)** - Vertical Datum: **NAVD 1988**
Iowa State Plane South Zone (1402)
Iowa Regional Coordinate System, Zone 8, Ames-Des Moines TM
US Survey Feet
2018

Point Name: **117 (Destroyed)**
Designation: G117 (set by WHKS in 2001)



Description:

Placed 5/8" X 6' - 0" Long
Aluminum Rod with Cap
Stamped G117 and NGS Style
Access Cover 3" Deep.

Location:

West side Z Avenue (South
60th Street, WDM) 0.2 mile
south of 335th Street (George
M. Mills Civic Parkway, WDM).

This document was prepared by Dan Corbin, Inc. on March 9, 2018 for Dallas County, Iowa.