

Dallas County, Iowa

Horizontal Datum: **NAD 83(NA2011)** - Vertical Datum: **NAVD 1988**
Iowa State Plane South Zone (1402)
Iowa Regional Coordinate System, Zone 8, Ames-Des Moines TM
US Survey Feet
2018

Point Name: **120**

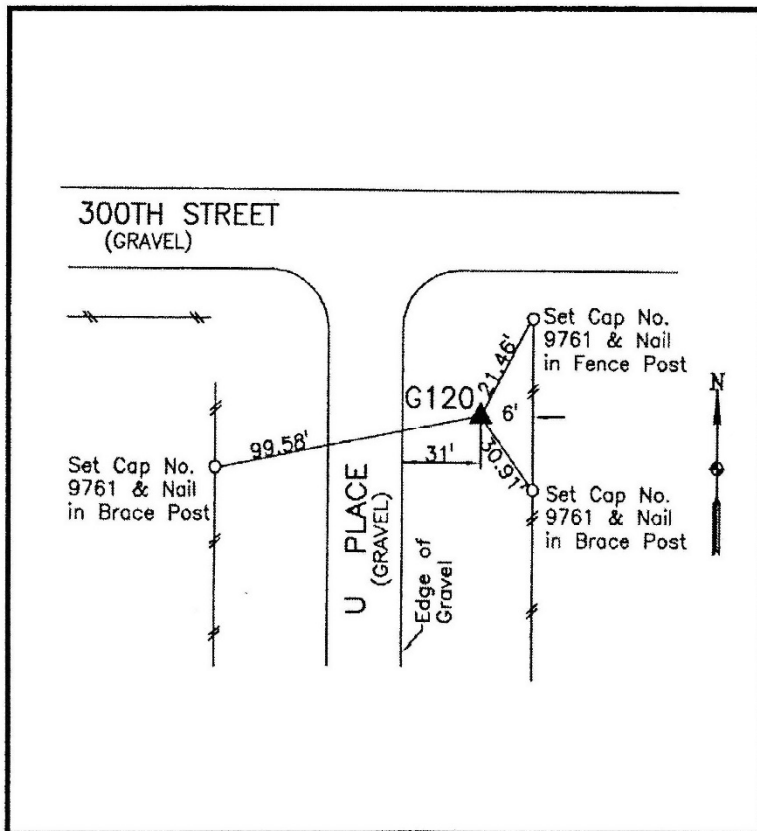
Designation: G120 (set by WHKS in 2001)

NAD 83(NA2011) Latitude: **N41°35'59.54914"** Longitude: **W93°53'47.96132"**
NAVD 88 Ortho Height: **1011.760sft** Ellip. Ht: **911.045sft** **Geoid12B**

Iowa South Zone (1402) Northing: **583143.325sft** Easting: **1531928.388sft**
Mapping Angle: **-0°15'41"** Combination Scale Factor: **0.99992910**

IaRCS Zone 8 Northing: **7491887.190sft** Easting: **18450768.475sft**
Mapping Angle: **-0°07'10"** Combination Scale Factor: **0.99999230**

Monument Type: 5/8" dia. x 6'-0" long alum. rod with cap and NGS style access cover.



Description:

Placed 5/8" X 6' - 0" Long
Aluminum Rod with Cap
Stamped G120 and NGS Style
Access Cover 3 " Deep.

Location:

East side of U Place about 150'
south of 300th Street.