

Dallas County, Iowa

Horizontal Datum: **NAD 83(NA2011)** - Vertical Datum: **NAVD 1988**
Iowa State Plane South Zone (1402)
Iowa Regional Coordinate System, Zone 8, Ames-Des Moines TM
US Survey Feet
2018

Point Name: **121**

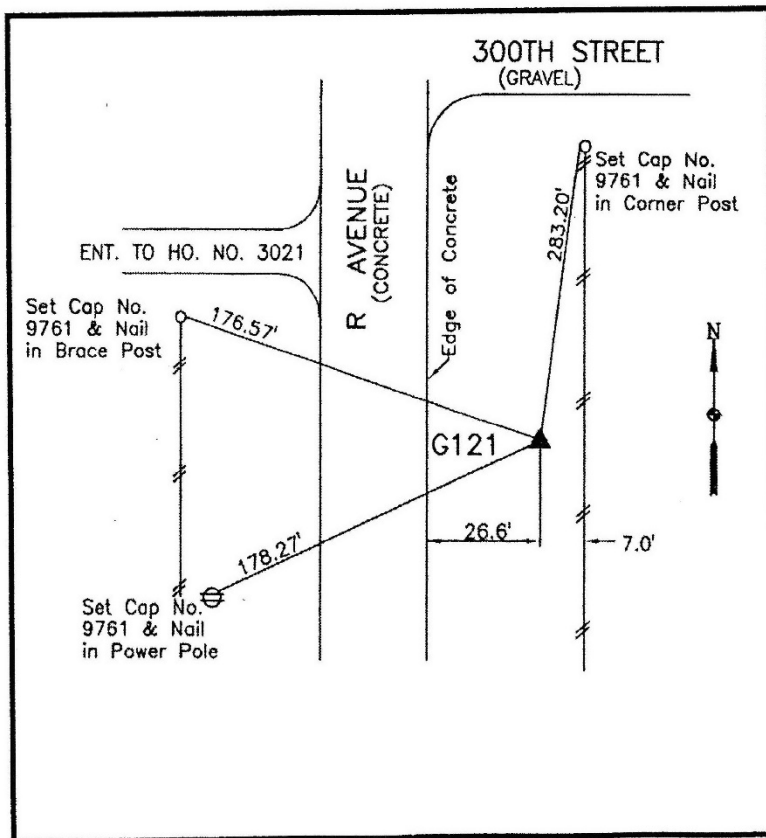
Designation: G121 (set by WHKS in 2001)

NAD 83(NA2011) Latitude: **N41°35'57.78696"** Longitude: **W93°57'16.48738"**
NAVD 88 Ortho Height: **1032.830sft** Ellip. Ht: **932.650sft** **Geoid12B**

Iowa South Zone (1402) Northing: **583042.486sft** Easting: **1516084.981sft**
Mapping Angle: **-0°17'58"** Combination Scale Factor: **0.99992801**

IaRCS Zone 8 Northing: **7491747.179sft** Easting: **18434924.348sft**
Mapping Angle: **-0°09'29"** Combination Scale Factor: **0.99999334**

Monument Type: 5/8" dia. x 6'-0" long alum. rod with cap and NGS style access cover.



Description:

Placed 5/8" X 6' - 0" Long
Aluminum Rod with Cap
Stamped G121 and NGS Style
Access Cover 3 " Deep.

Location:

East side R Avenue (R16) 0.1
mile south of 300th Street.