

Dallas County, Iowa

Horizontal Datum: **NAD 83(NA2011)** - Vertical Datum: **NAVD 1988**
Iowa State Plane South Zone (1402)
Iowa Regional Coordinate System, Zone 8, Ames-Des Moines TM
US Survey Feet
2018

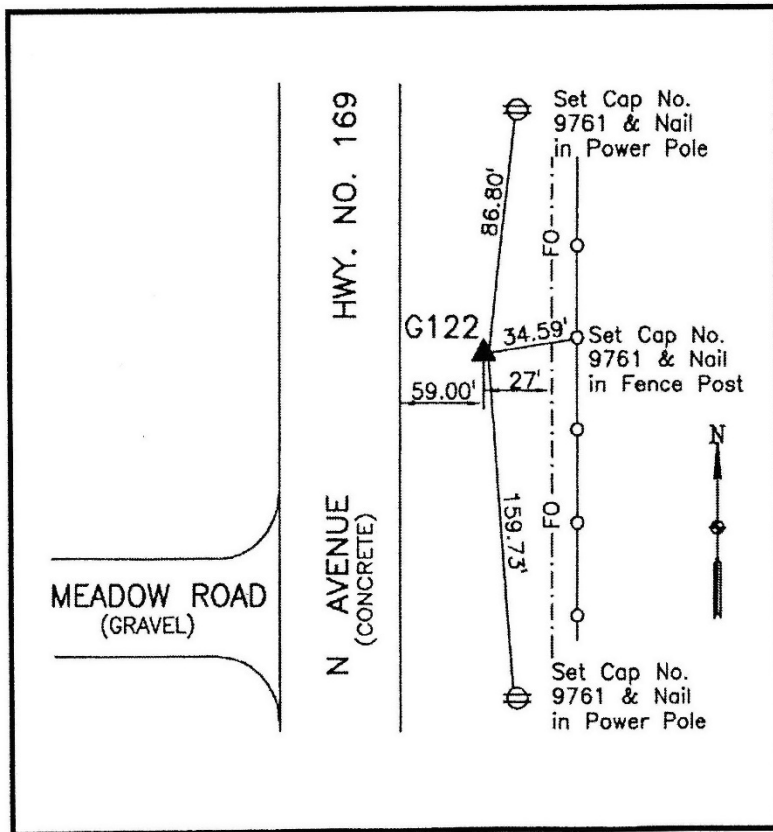
Point Name: **122 (Reset by DCI in 2017)**
Designation: G122 (set by WHKS in 2001)

NAD 83(NA2011) Latitude: **N41°36'01.84766"** Longitude: **W94°00'46.11023"**
NAVD 88 Ortho Height: **967.841sft** Ellip. Ht: **868.282sft** Geoid**12B**

Iowa South Zone (1402) Northing: **583542.048sft** Easting: **1500161.540sft**
Mapping Angle: **-0°20'16"** Combination Scale Factor: **0.99993122**

IaRCS Zone 8 Northing: **7492207.495sft** Easting: **18418998.663sft**
Mapping Angle: **-0°11'48"** Combination Scale Factor: **0.99999907**

Monument Type: 5/8" dia. x 6'-0" long alum. rod with cap and NGS style access cover.



Description:

Placed 5/8" X 6' - 0" Long Aluminum Rod with Cap Stamped G122 and NGS Style Access Cover 2" Deep.

Location:

East side of N Avenue (Hwy. 169) at intersection of Meadow Road. Hwy. 169 Station 356+60.