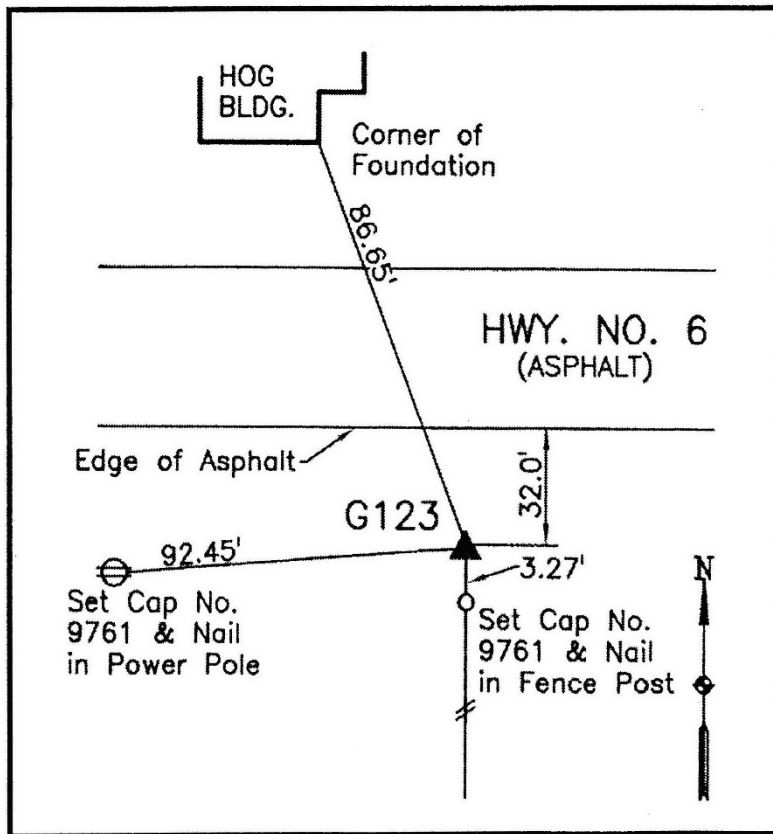


**Dallas County, Iowa**  
Horizontal Datum: **NAD 83(NA2011)** - Vertical Datum: **NAVD 1988**  
Iowa State Plane South Zone (1402)  
Iowa Regional Coordinate System, Zone 8, Ames-Des Moines TM  
US Survey Feet  
**2018**

Point Name: **123 (Destroyed)**  
Designation: G123 (set by WHKS in 2001)



**Description:**

Placed 5/8" X 6' - 0" Long Aluminum Rod with Cap Stamped G123 and NGS Style Access Cover 1" Deep.

**Location:**

South side of Hwy. 6 between K Avenue and L Avenue. Monument location is in line with fence south. Hwy. 6 Station 708+00.