

Dallas County, Iowa
Horizontal Datum: **NAD 83(NA2011)** - Vertical Datum: **NAVD 1988**
Iowa State Plane South Zone (1402)
Iowa Regional Coordinate System, Zone 8, Ames-Des Moines TM
US Survey Feet
2018

Point Name: **125**

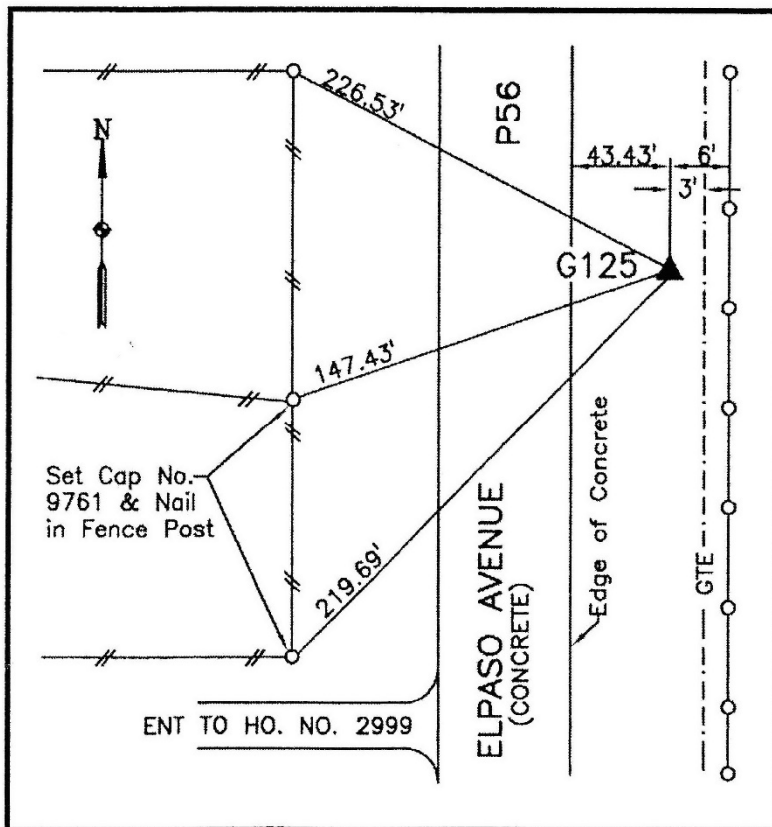
Designation: G125 (set by WHKS in 2001)

NAD 83(NA2011) Latitude: **N41°36'08.07656"** Longitude: **W94°11'54.30224"**
NAVD 88 Ortho Height: **1050.988sft** Ellip. Ht: **954.297sft** **Geoid12B**

Iowa South Zone (1402) Northing: **584525.937sft** Easting: **1449402.781sft**
Mapping Angle: **-0°27'36"** Combination Scale Factor: **0.99992733**

IaRCS Zone 8 Northing: **7493066.818sft** Easting: **18368233.915sft**
Mapping Angle: **-0°19'12"** Combination Scale Factor: **1.00000730**

Monument Type: 5/8" dia. x 6'-0" long alum. rod with cap and NGS style access cover.



Description:

Placed 5/8" X 6' - 0" Long
Aluminum Rod with Cap
Stamped G125 and NGS Style
Access Cover 3 " Deep.

Location:

East side of El Paso Ave. (P46)
0.2 mile south of Linden Road.