

Dallas County, Iowa

Horizontal Datum: **NAD 83(NA2011)** - Vertical Datum: **NAVD 1988**
Iowa State Plane South Zone (1402)
Iowa Regional Coordinate System, Zone 8, Ames-Des Moines TM
US Survey Feet
2018

Point Name: **126**

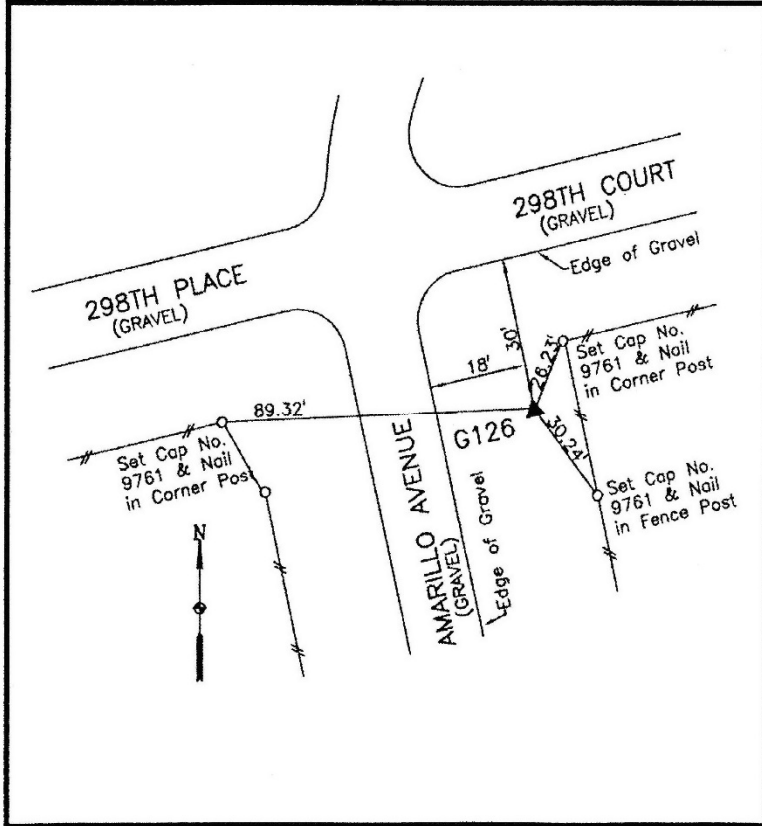
Designation: G126 (set by WHKS in 2001)

NAD 83(NA2011) Latitude: **N41°36'16.66243"** Longitude: **W94°15'51.90030"**
NAVD 88 Ortho Height: **1111.575sft** Ellip. Ht: **1016.178sft** **Geoid12B**

Iowa South Zone (1402) Northing: **585546.714sft** Easting: **1431360.316sft**
Mapping Angle: **-0°30'13"** Combination Scale Factor: **0.99992467**

laRCS Zone 8 Northing: **7494043.586sft** Easting: **18350187.518sft**
Mapping Angle: **-0°21'49"** Combination Scale Factor: **1.00001016**

Monument Type: 5/8" dia. x 6'-0" long alum. rod with cap and NGS style access cover.



Description:

Placed 5/8" X 6' - 0" Long
Aluminum Rod with Cap
Stamped G126 and NGS Style
Access Cover 5 " Deep.

Location:

Southeast corner Amarillo
Avenue and 298th Court.