

Dallas County, Iowa

Horizontal Datum: **NAD 83(NA2011)** - Vertical Datum: **NAVD 1988**
Iowa State Plane South Zone (1402)
Iowa Regional Coordinate System, Zone 8, Ames-Des Moines TM
US Survey Feet
2018

Point Name: **127**

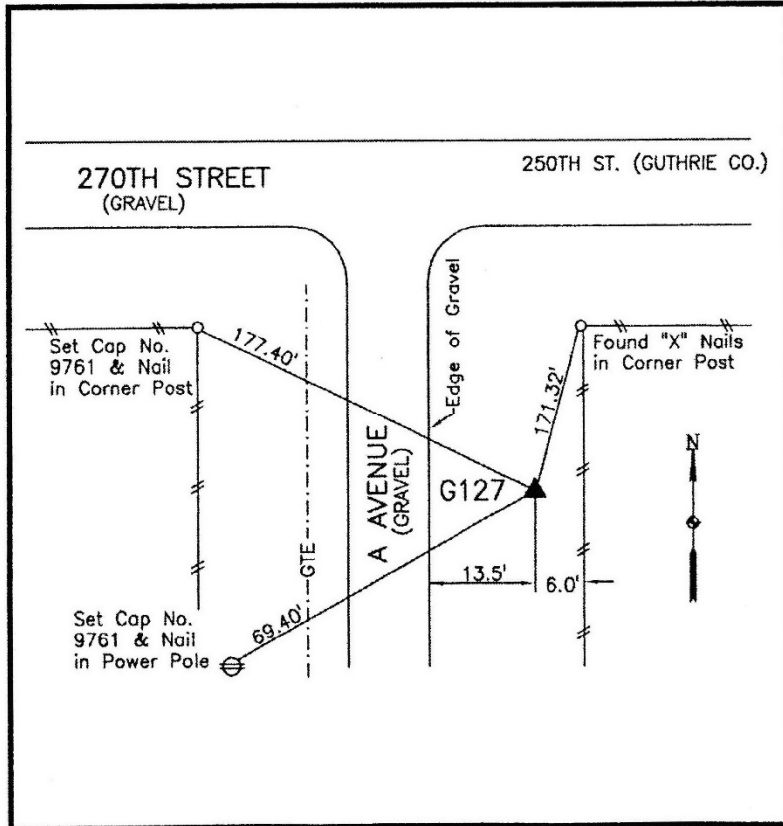
Designation: G127 (set by WHKS in 2001)

NAD 83(NA2011) Latitude: **N41°38'38.63643"** Longitude: **W94°16'47.32541"**
NAVD 88 Ortho Height: **1093.812sft** Ellip. Ht: **999.380sft** **Geoid12B**

Iowa South Zone (1402) Northing: **599953.652sft** Easting: **1427278.722sft**
Mapping Angle: **-0°30'49"** Combination Scale Factor: **0.99993056**

IaRCS Zone 8 Northing: **7508441.740sft** Easting: **18346070.481sft**
Mapping Angle: **-0°22'27"** Combination Scale Factor: **1.00001239**

Monument Type: 5/8" dia. x 6'-0" long alum. rod with cap and NGS style access cover.



Description:

Placed 5/8" X 6' - 0" Long
Aluminum Rod with Cap
Stamped G127 and NGS Style
Access Cover 4 " Deep.

Location:

At the west county line. East
side of A Avenue just south of
270th Street.

This document was prepared by Dan Corbin, Inc. on March 9, 2018 for Dallas County, Iowa.