

Dallas County, Iowa

Horizontal Datum: **NAD 83(NA2011)** - Vertical Datum: **NAVD 1988**
Iowa State Plane South Zone (1402)
Iowa Regional Coordinate System, Zone 8, Ames-Des Moines TM
US Survey Feet
2018

Point Name: **128**

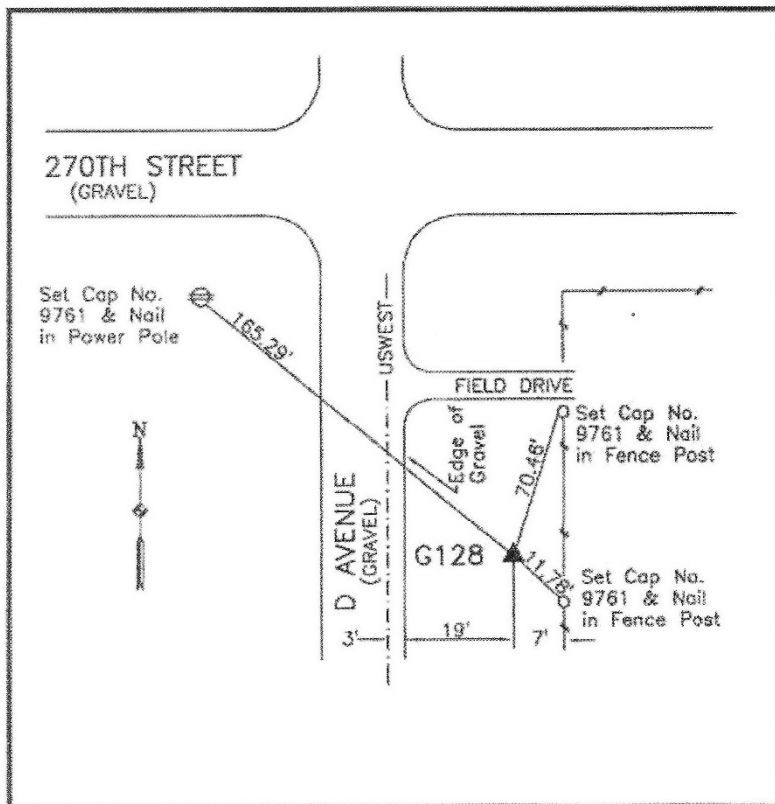
Designation: G128 (set by WHKS in 2001)

NAD 83(NA2011) Latitude: **N41°38'36.87004"** Longitude: **W94°13'18.49954"**
NAVD 88 Ortho Height: **1016.038sft** Ellip. Ht: **920.525sft** **Geoid12B**

Iowa South Zone (1402) Northing: **599638.018sft** Easting: **1443131.351sft**
Mapping Angle: **-0°28'32"** Combination Scale Factor: **0.99993425**

IaRCS Zone 8 Northing: **7508164.714sft** Easting: **18361925.087sft**
Mapping Angle: **-0°20'08"** Combination Scale Factor: **1.00001086**

Monument Type: 5/8" dia. x 6'-0" long alum. rod with cap and NGS style access cover.



Description:

Placed 5/8" X 6' - 0" Long
Aluminum Rod with Cap
Stamped G128 and NGS Style
Access Cover 4 " Deep.

Location:

East side of D Avenue just
south of 270th Street.