

**Dallas County, Iowa**

Horizontal Datum: **NAD 83(NA2011)** - Vertical Datum: **NAVD 1988**  
Iowa State Plane South Zone (1402)  
Iowa Regional Coordinate System, Zone 8, Ames-Des Moines TM  
US Survey Feet  
**2018**

Point Name: **129**

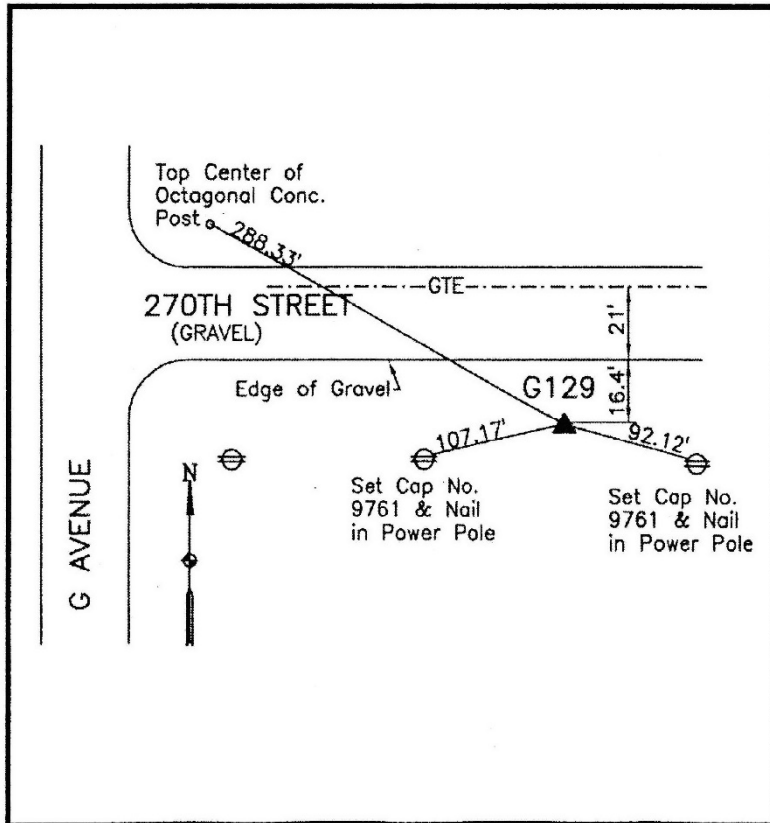
**Designation:** G129 (set by WHKS in 2001)

NAD 83(NA2011) Latitude: **N41°38'38.55935"** Longitude: **W94°09'46.84580"**  
NAVD 88 Ortho Height: **1050.418sft** Ellip. Ht: **953.800sft** **Geoid12B**

**Iowa South Zone (1402)** Northing: **599681.085sft** Easting: **1459201.671sft**  
Mapping Angle: **-0°26'12"** Combination Scale Factor: **0.99993273**

**IaRCS Zone 8** Northing: **7508247.041sft** Easting: **18377996.445sft**  
Mapping Angle: **-0°17'48"** Combination Scale Factor: **1.00000450**

**Monument Type:** 5/8" dia. x 6'-0" long alum. rod with cap and NGS style access cover.



Description:

Placed 5/8" X 6' - 0" Long  
Aluminum Rod with Cap  
Stamped G129 and NGS Style  
Access Cover 3 " Deep.

Location:

South side 270th Street just  
east of G Avenue.

*This document was prepared by Dan Corbin, Inc. on March 9, 2018 for Dallas County, Iowa.*