

Dallas County, Iowa

Horizontal Datum: **NAD 83(NA2011)** - Vertical Datum: **NAVD 1988**
Iowa State Plane South Zone (1402)
Iowa Regional Coordinate System, Zone 8, Ames-Des Moines TM
US Survey Feet
2018

Point Name: **130**

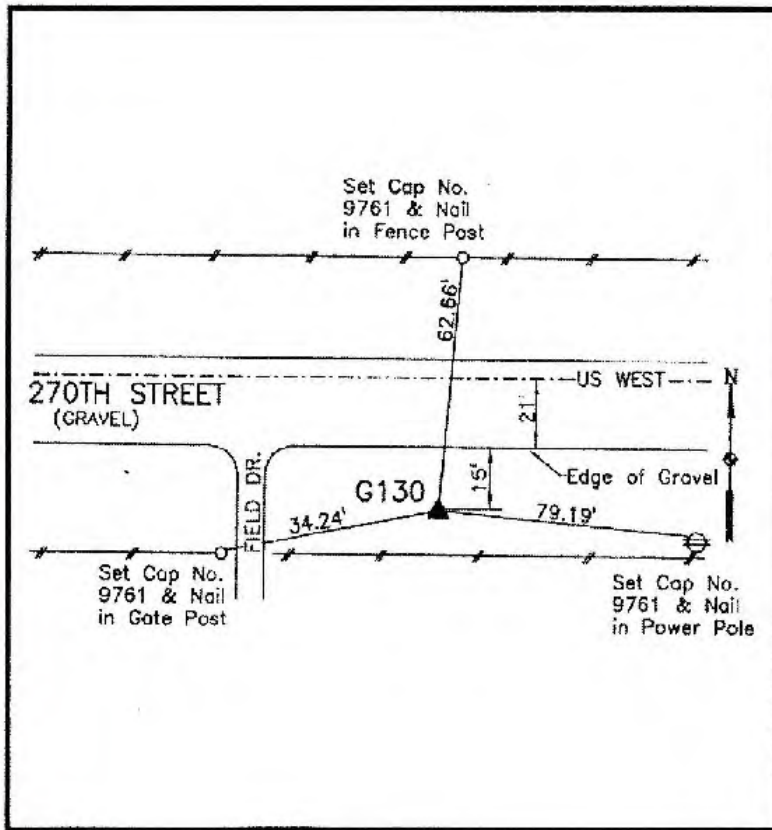
Designation: G130 (set by WHKS in 2001)

NAD 83(NA2011) Latitude: **N41°38'38.23594"** Longitude: **W94°06'29.96656"**
NAVD 88 Ortho Height: **953.982sft** Ellip. Ht: **856.354sft** **Geoid12B**

Iowa South Zone (1402) Northing: **599539.115sft** Easting: **1474148.726sft**
Mapping Angle: **-0°24'03"** Combination Scale Factor: **0.99993736**

IaRCS Zone 8 Northing: **7508141.661sft** Easting: **18392944.847sft**
Mapping Angle: **-0°15'37"** Combination Scale Factor: **1.00000523**

Monument Type: 5/8" dia. x 6'-0" long alum. rod with cap and NGS style access cover.



Description:

Placed 5/8" X 6' - 0" Long
Aluminum Rod with Cap
Stamped G130 and NGS Style
Access Cover 2 " Deep.

Location:

South side 270th Street, east
side of field entrance 0.2 mile
west of J Avenue.

This document was prepared by Dan Corbin, Inc. on March 9, 2018 for Dallas County, Iowa.