

Dallas County, Iowa
Horizontal Datum: **NAD 83(NA2011)** - Vertical Datum: **NAVD 1988**
Iowa State Plane South Zone (1402)
Iowa Regional Coordinate System, Zone 8, Ames-Des Moines TM
US Survey Feet
2018

Point Name: **132**

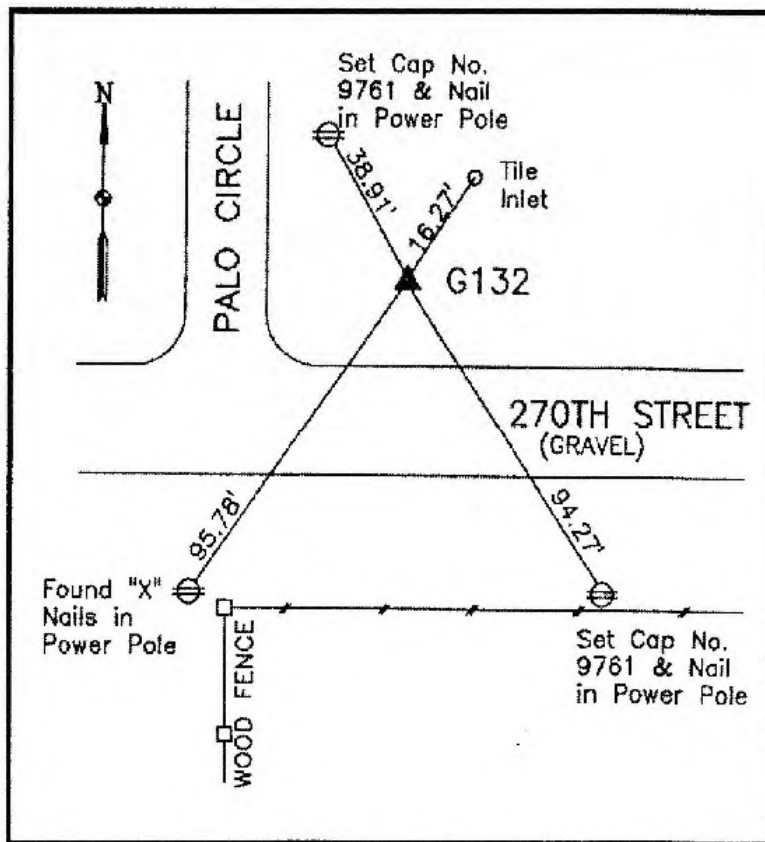
Designation: G132 (set by WHKS in 2001)

NAD 83(NA2011) Latitude: **N41°38'37.83703"** Longitude: **W93°59'19.89461"**
NAVD 88 Ortho Height: **1004.412sft** Ellip. Ht: **905.045sft** **Geoid12B**

Iowa South Zone (1402) Northing: **599292.805sft** Easting: **1506800.291sft**
Mapping Angle: **-0°19'19"** Combination Scale Factor: **0.99993503**

IaRCS Zone 8 Northing: **7507975.575sft** Easting: **18425599.018sft**
Mapping Angle: **-0°10'51"** Combination Scale Factor: **0.99999614**

Monument Type: 5/8" dia. x 6'-0" long alum. rod with cap and NGS style access cover.



Description:

Placed 5/8" X 6' - 0" Long
Aluminum Rod with Cap
Stamped G132 and NGS Style
Access Cover 3" Deep.

Location:

Northeast corner of 270th
Street and Palo Circle.

This document was prepared by Dan Corbin, Inc. on March 9, 2018 for Dallas County, Iowa.