

**Dallas County, Iowa**

Horizontal Datum: **NAD 83(NA2011)** - Vertical Datum: **NAVD 1988**

Iowa State Plane South Zone (1402)

Iowa Regional Coordinate System, Zone 8, Ames-Des Moines TM

US Survey Feet

**2018**

Point Name: **133**

**Designation:** G133 (set by WHKS in 2001)

NAD 83(NA2011) Latitude: **N41°38'47.23764"** Longitude: **W93°55'51.29133"**

NAVD 88 Ortho Height: **1039.162sft** Ellip. Ht: **939.190sft** **Geoid12B**

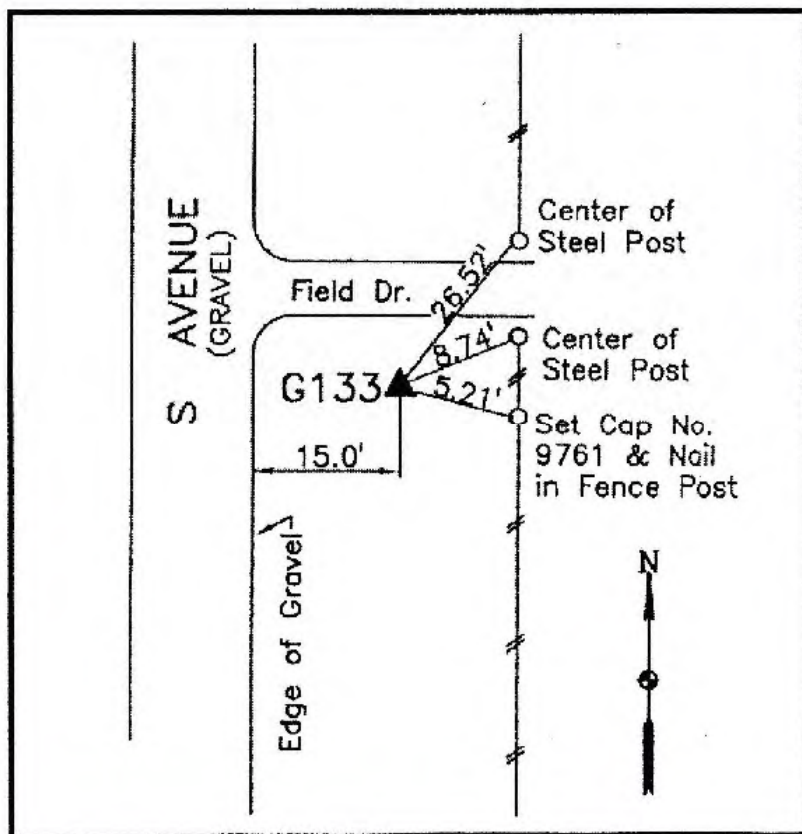
**Iowa South Zone (1402)** Northing: **600160.562sft** Easting: **1522642.641sft**

Mapping Angle: **-0°17'02"** Combination Scale Factor: **0.99993375**

**IaRCS Zone 8** Northing: **7508882.455sft** Easting: **18441440.125sft**

Mapping Angle: **-0°08'33"** Combination Scale Factor: **0.99999210**

**Monument Type:** 5/8" dia. x 6'-0" long alum. rod with cap and NGS style access cover.



**Description:**

Placed 5/8" X 6' - 0" Long Aluminum Rod with Cap Stamped G133 and NGS Style Access Cover 1" Deep.

**Location:**

East side of S Ave. 0.2 mile north of 270th Street. Near south edge of field entrance.