

**Dallas County, Iowa**

Horizontal Datum: **NAD 83(NA2011)** - Vertical Datum: **NAVD 1988**  
Iowa State Plane South Zone (1402)  
Iowa Regional Coordinate System, Zone 8, Ames-Des Moines TM  
US Survey Feet  
**2018**

Point Name: **136**

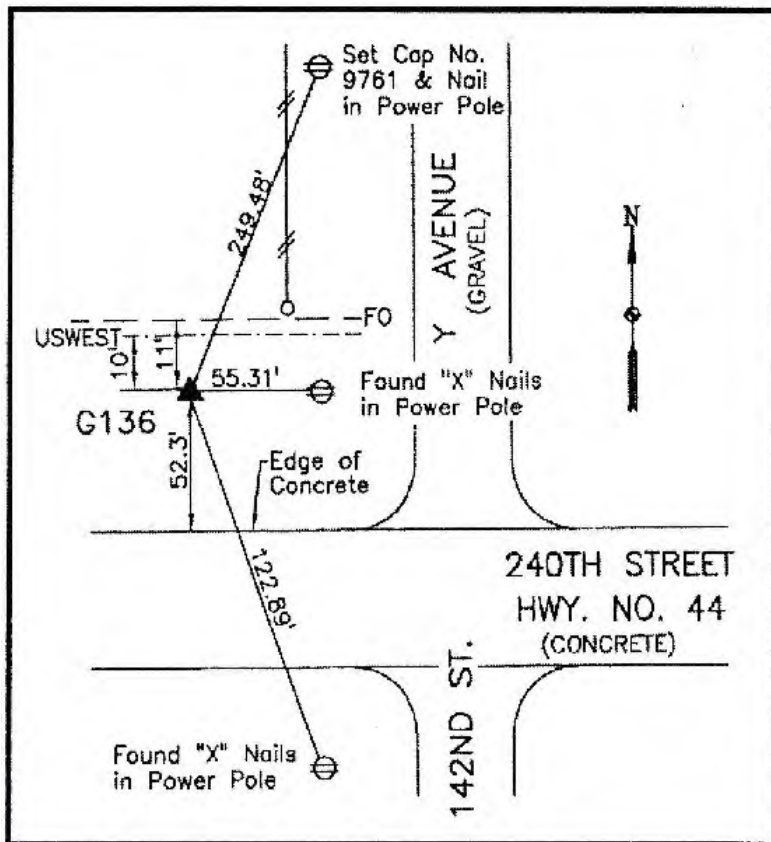
**Designation:** G136 (set by WHKS in 2001)

NAD 83(NA2011) Latitude: **N41°41'18.97754"** Longitude: **W93°48'53.01930"**  
NAVD 88 Ortho Height: **999.673sft** Ellip. Ht: **898.931sft** **Geoid12B**

**Iowa South Zone (1402)** Northing: **615383.173sft** Easting: **1554453.259sft**  
Mapping Angle: **-0°12'26"** Combination Scale Factor: **0.99994166**

**IaRCS Zone 8** Northing: **7524184.551sft** Easting: **18473214.684sft**  
Mapping Angle: **-0°03'55"** Combination Scale Factor: **0.99999093**

**Monument Type:** 5/8" dia. x 6'-0" long alum. rod with cap and NGS style access cover.



**Description:**

Placed 5/8" X 6' - 0" Long  
Aluminum Rod with Cap  
Stamped G136 and NGS Style  
Access Cover 4 " Deep.

**Location:**

Northwest corner of the  
intersection of Y Avenue with  
240th Street (Hwy. 44) at the  
west county line.

*This document was prepared by Dan Corbin, Inc. on March 9, 2018 for Dallas County, Iowa.*