

Dallas County, Iowa
Horizontal Datum: **NAD 83(NA2011)** - Vertical Datum: **NAVD 1988**
Iowa State Plane South Zone (1402)
Iowa Regional Coordinate System, Zone 8, Ames-Des Moines TM
US Survey Feet
2018

Point Name: **137**

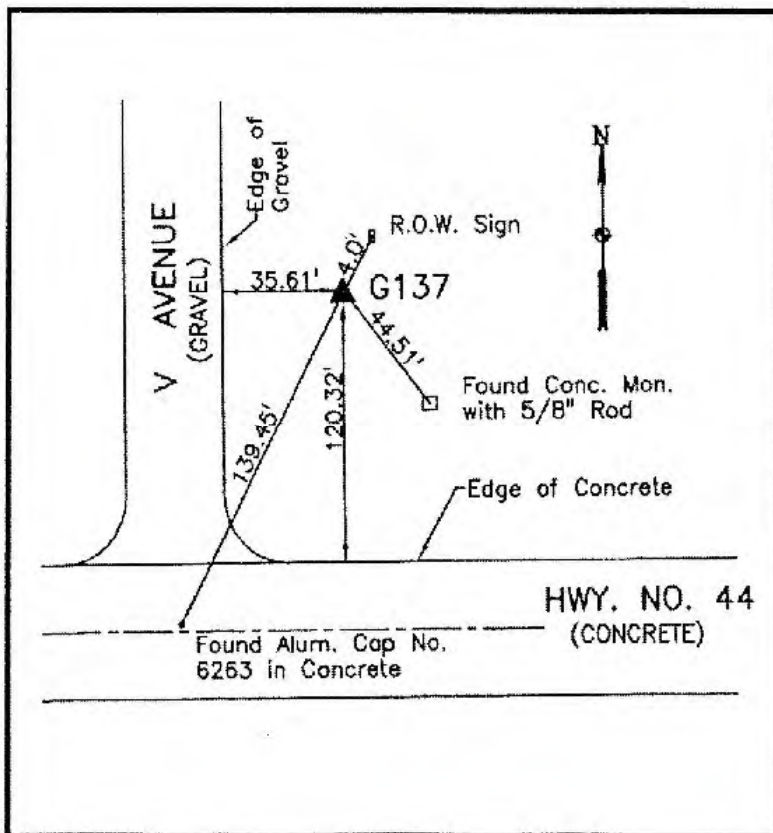
Designation: G137 (set by WHKS in 2001)

NAD 83(NA2011) Latitude: **N41°41'19.17443"** Longitude: **W93°52'20.17909"**
NAVD 88 Ortho Height: **967.370sft** Ellip. Ht: **867.219sft** **Geoid12B**

Iowa South Zone (1402) Northing: **615465.170sft** Easting: **1538735.994sft**
Mapping Angle: **-0°14'43"** Combination Scale Factor: **0.99994318**

IaRCS Zone 8 Northing: **7524227.622sft** Easting: **18457496.481sft**
Mapping Angle: **-0°06'13"** Combination Scale Factor: **0.99999368**

Monument Type: 5/8" dia. x 6'-0" long alum. rod with cap and NGS style access cover.



Description:

Placed 5/8" X 6' - 0" Long Aluminum Rod with Cap Stamped G137 and NGS Style Access Cover 3" Deep.

Location:

Northeast corner of the intersection of V Avenue with 240th Street (Hwy. 44) near IDOT ROW sign.