

Dallas County, Iowa

Horizontal Datum: **NAD 83(NA2011)** - Vertical Datum: **NAVD 1988**
Iowa State Plane South Zone (1402)
Iowa Regional Coordinate System, Zone 8, Ames-Des Moines TM
US Survey Feet
2018

Point Name: **138**

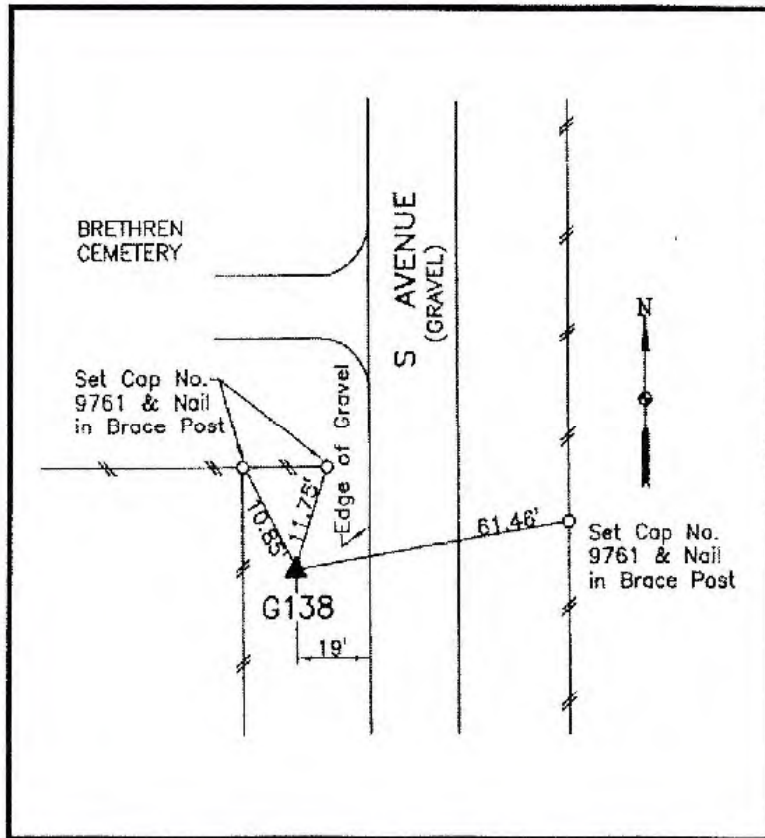
Designation: G138 (set by WHKS in 2001)

NAD 83(NA2011) Latitude: **N41°41'22.45297"** Longitude: **W93°55'51.63722"**
NAVD 88 Ortho Height: **1046.592sft** Ellip. Ht: **947.099sft** **Geoid12B**

Iowa South Zone (1402) Northing: **615871.097sft** Easting: **1522694.228sft**
Mapping Angle: **-0°17'02"** Combination Scale Factor: **0.99993951**

IaRCS Zone 8 Northing: **7524593.939sft** Easting: **18441452.939sft**
Mapping Angle: **-0°08'33"** Combination Scale Factor: **0.99999172**

Monument Type: 5/8" dia. x 6'-0" long alum. rod with cap and NGS style access cover.



Description:

Placed 5/8" X 6' - 0" Long
Aluminum Rod with Cap
Stamped G138 and NGS Style
Access Cover 2 " Deep.

Location:

West side of S Avenue near
southeast corner of Brethren
Cemetery, 0.1 mile north of
240th Street (Hwy. 44).