

Dallas County, Iowa

Horizontal Datum: **NAD 83(NA2011)** - Vertical Datum: **NAVD 1988**
Iowa State Plane South Zone (1402)
Iowa Regional Coordinate System, Zone 8, Ames-Des Moines TM
US Survey Feet
2018

Point Name: **140**

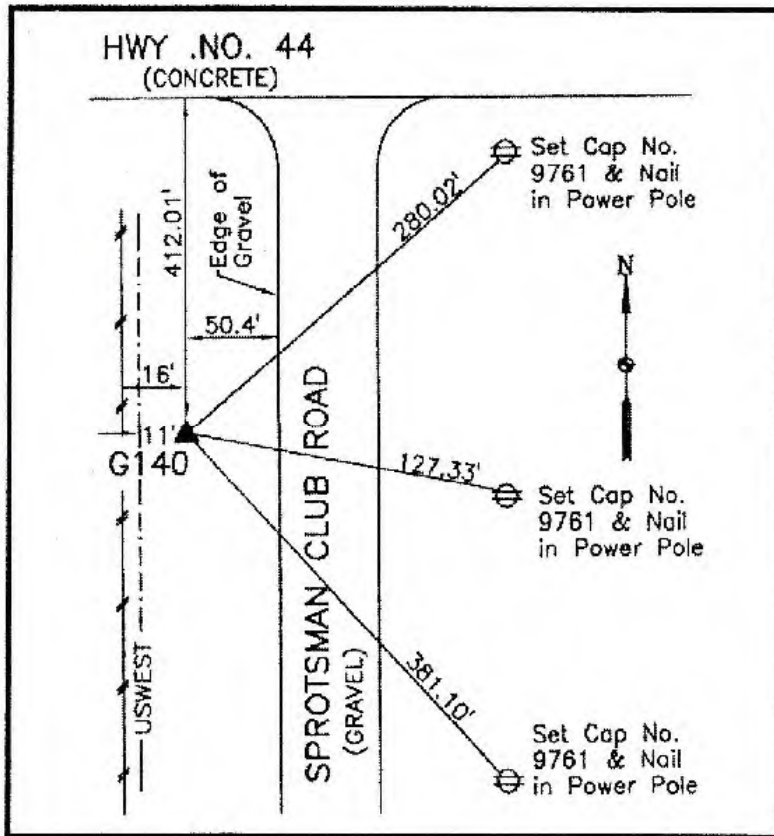
Designation: G140 (set by WHKS in 2001)

NAD 83(NA2011) Latitude: **N41°41'14.30551"** Longitude: **W94°02'52.06593"**
NAVD 88 Ortho Height: **1009.545sft** Ellip. Ht: **911.589sft** **Geoid12B**

Iowa South Zone (1402) Northing: **615225.908sft** Easting: **1490791.561sft**
Mapping Angle: **-0°21'39"** Combination Scale Factor: **0.99994087**

IaRCS Zone 8 Northing: **7523870.214sft** Easting: **18409550.204sft**
Mapping Angle: **-0°13'13"** Combination Scale Factor: **0.99999885**

Monument Type: 5/8" dia. x 6'-0" long alum. rod with cap and NGS style access cover.



Description:

Placed 5/8" X 6' - 0" Long
Aluminum Rod with Cap
Stamped G140 and NGS Style
Access Cover 2 " Deep.

Location:

West side Sportsman Club
Road 0.1 mile south of 240th
Street (Hwy. 44).

This document was prepared by Dan Corbin, Inc. on March 9, 2018 for Dallas County, Iowa.