

Dallas County, Iowa

Horizontal Datum: **NAD 83(NA2011)** - Vertical Datum: **NAVD 1988**
Iowa State Plane South Zone (1402)
Iowa Regional Coordinate System, Zone 8, Ames-Des Moines TM
US Survey Feet
2018

Point Name: **141**

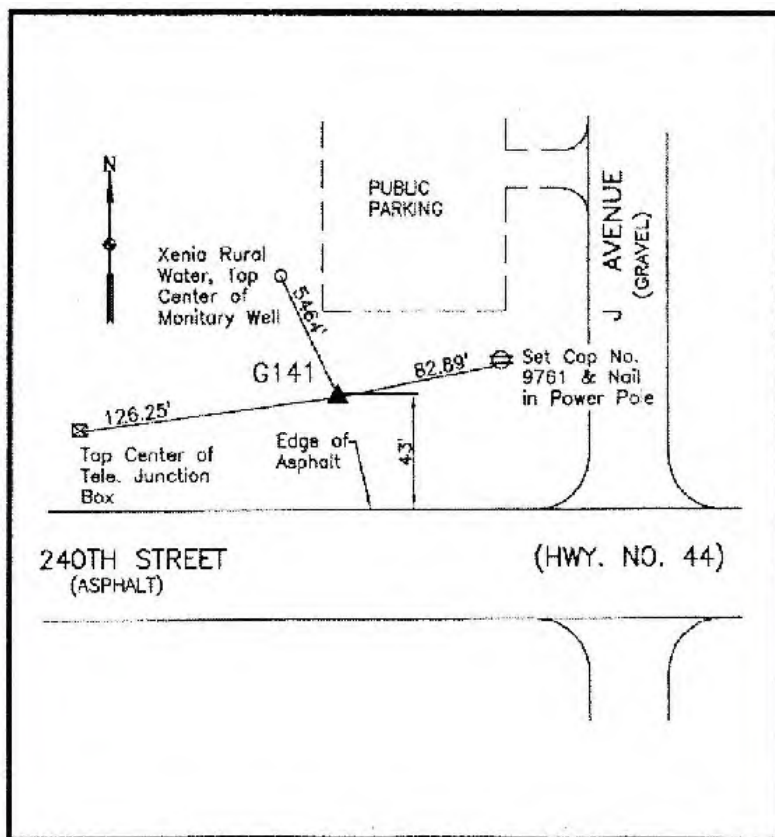
Designation: G141 (set by WHKS in 2001)

NAD 83(NA2011) Latitude: **N41°41'18.72304"** Longitude: **W94°06'21.82829"**
NAVD 88 Ortho Height: **1016.044sft** Ellip. Ht: **919.124sft** **Geoid12B**

Iowa South Zone (1402) Northing: **615778.594sft** Easting: **1474879.777sft**
Mapping Angle: **-0°23'57"** Combination Scale Factor: **0.99994069**

IaRCS Zone 8 Northing: **7524383.932sft** Easting: **18393636.163sft**
Mapping Angle: **-0°15'32"** Combination Scale Factor: **1.00000207**

Monument Type: 5/8" dia. x 6'-0" long alum. rod with cap and NGS style access cover.



Description:

Placed 5/8" X 6' - 0" Long Aluminum Rod with Cap Stamped G141 and NGS Style Access Cover 5 " Deep.

Location:

Northwest corner of intersection of 240th Street (Hwy. 44) and J Avenue (P58) near southwest corner of public parking area.