

Dallas County, Iowa

Horizontal Datum: **NAD 83(NA2011)** - Vertical Datum: **NAVD 1988**
Iowa State Plane South Zone (1402)
Iowa Regional Coordinate System, Zone 8, Ames-Des Moines TM
US Survey Feet
2018

Point Name: **142**

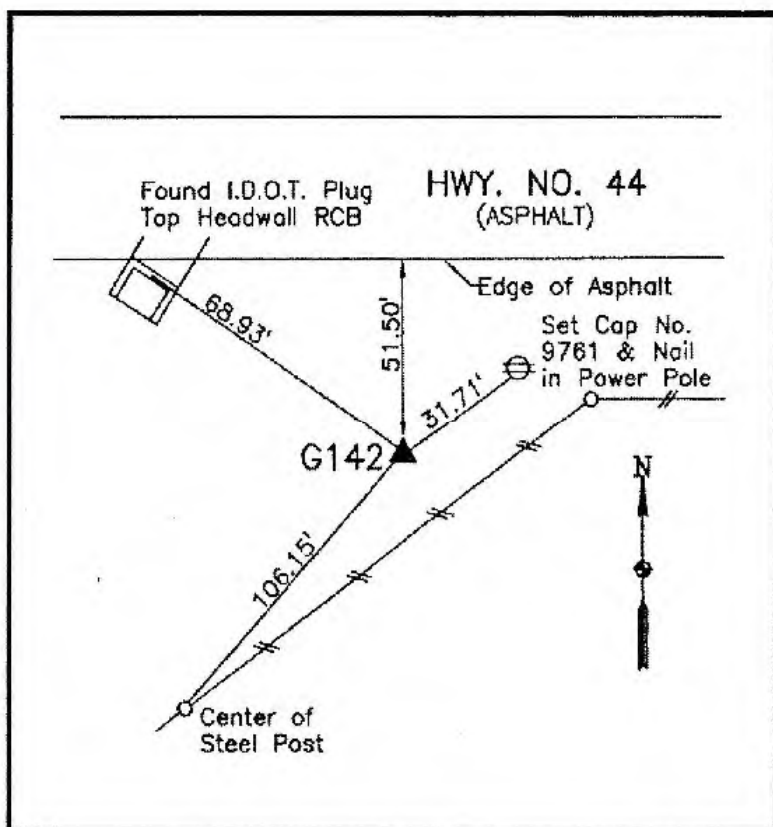
Designation: G142 (set by WHKS in 2001)

NAD 83(NA2011) Latitude: **N41°41'17.57738"** Longitude: **W94°09'45.95775"**
NAVD 88 Ortho Height: **990.193sft** Ellip. Ht: **894.337sft** **Geoid12B**

Iowa South Zone (1402) Northing: **615775.594sft** Easting: **1459391.730sft**
Mapping Angle: **-0°26'12"** Combination Scale Factor: **0.99994182**

IaRCS Zone 8 Northing: **7524343.071sft** Easting: **18378147.189sft**
Mapping Angle: **-0°17'48"** Combination Scale Factor: **1.00000729**

Monument Type: 5/8" dia. x 6'-0" long alum. rod with cap and NGS style access cover.



Description:

Placed 5/8" X 6' - 0" Long Aluminum Rod with Cap Stamped G142 and NGS Style Access Cover 5" Deep.

Location:

South side 240th Street (Hwy. 44) 400± feet east of G Avenue near bend in fence along south road right of way. Hwy. 44 Station 321+30.