

Dallas County, Iowa

Horizontal Datum: **NAD 83(NA2011)** - Vertical Datum: **NAVD 1988**
Iowa State Plane South Zone (1402)
Iowa Regional Coordinate System, Zone 8, Ames-Des Moines TM
US Survey Feet
2018

Point Name: **143**

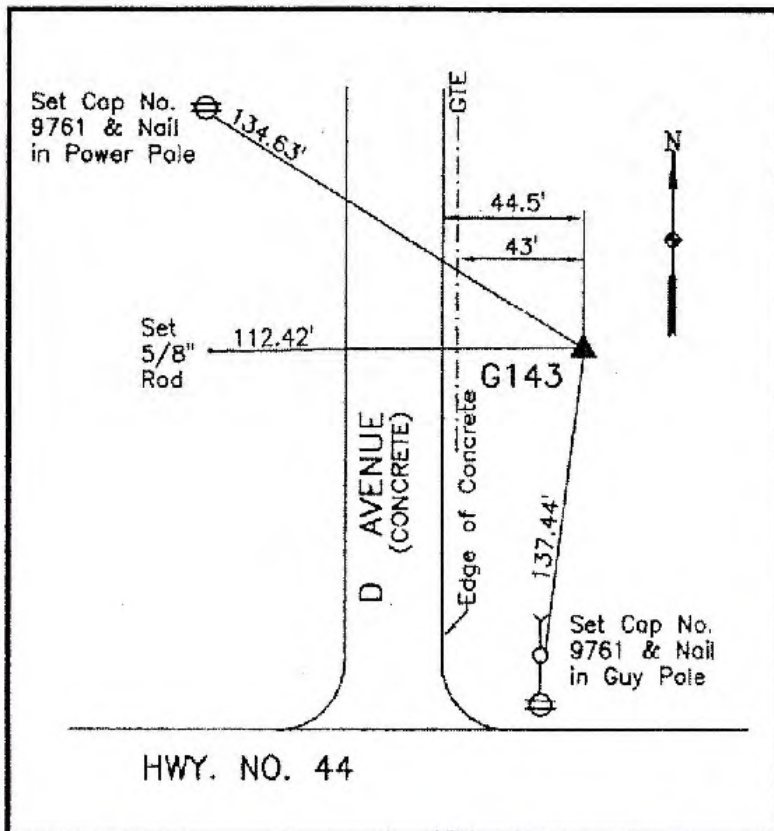
Designation: G143 (set by WHKS in 2001)

NAD 83(NA2011) Latitude: **N41°41'20.41492"** Longitude: **W94°13'18.62576"**
NAVD 88 Ortho Height: **1031.138sft** Ellip. Ht: **936.411sft** **Geoid12B**

Iowa South Zone (1402) Northing: **616191.218sft** Easting: **1443259.140sft**
Mapping Angle: **-0°28'32"** Combination Scale Factor: **0.99993993**

IaRCS Zone 8 Northing: **7524719.391sft** Easting: **18362012.540sft**
Mapping Angle: **-0°20'10"** Combination Scale Factor: **1.00001008**

Monument Type: 5/8" dia. x 6'-0" long alum. rod with cap and NGS style access cover.



Description:

Placed 5/8" X 6' - 0" Long
Aluminum Rod with Cap
Stamped G143 and NGS Style
Access Cover 3 " Deep.

Location:

East side of D Avenue (P46)
just north of 240th Street (Hwy.
44).