

Dallas County, Iowa

Horizontal Datum: **NAD 83(NA2011)** - Vertical Datum: **NAVD 1988**
Iowa State Plane South Zone (1402)
Iowa Regional Coordinate System, Zone 8, Ames-Des Moines TM
US Survey Feet
2018

Point Name: **144**

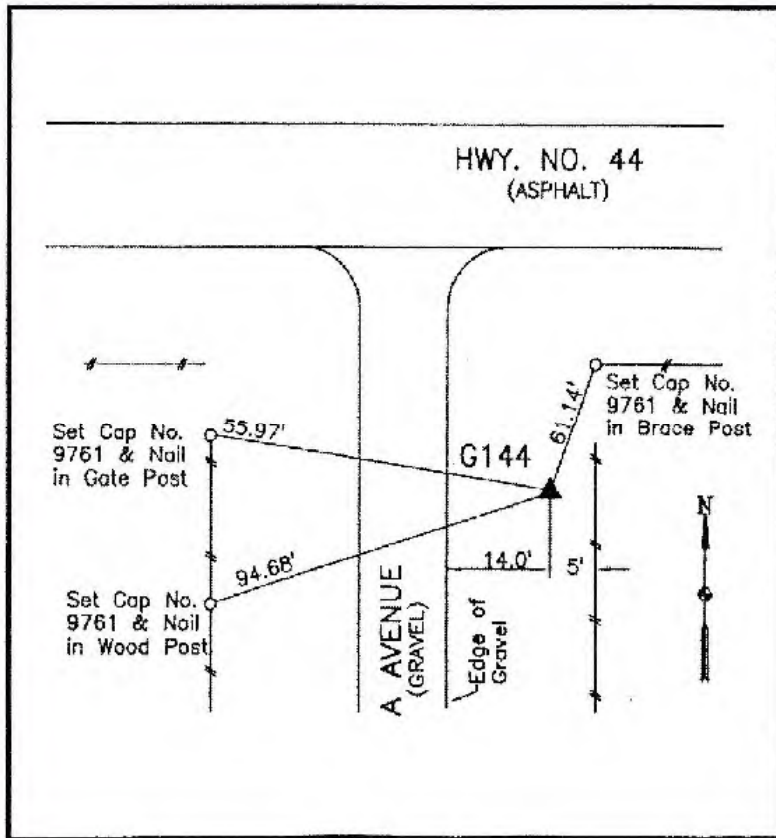
Designation: G144 (set by WHKS in 2001)

NAD 83(NA2011) Latitude: **N41°41'16.89270"** Longitude: **W94°16'49.40668"**
NAVD 88 Ortho Height: **1008.829sft** Ellip. Ht: **915.105sft** **Geoid12B**

Iowa South Zone (1402) Northing: **615972.811sft** Easting: **1427264.423sft**
Mapping Angle: **-0°30'51"** Combination Scale Factor: **0.99994080**

IaRCS Zone 8 Northing: **7524462.078sft** Easting: **18346017.237sft**
Mapping Angle: **-0°22'30"** Combination Scale Factor: **1.00001643**

Monument Type: 5/8" dia. x 6'-0" long alum. rod with cap and NGS style access cover.



Description:

Placed 5/8" X 6' - 0" Long
Aluminum Rod with Cap
Stamped G144 and NGS Style
Access Cover 3 " Deep.

Location:

Southeast corner of
intersection of 240th Street
(Hwy. 44) and A Avenue.