

**Dallas County, Iowa**

Horizontal Datum: **NAD 83(NA2011)** - Vertical Datum: **NAVD 1988**  
Iowa State Plane South Zone (1402)  
Iowa Regional Coordinate System, Zone 8, Ames-Des Moines TM  
US Survey Feet  
**2018**

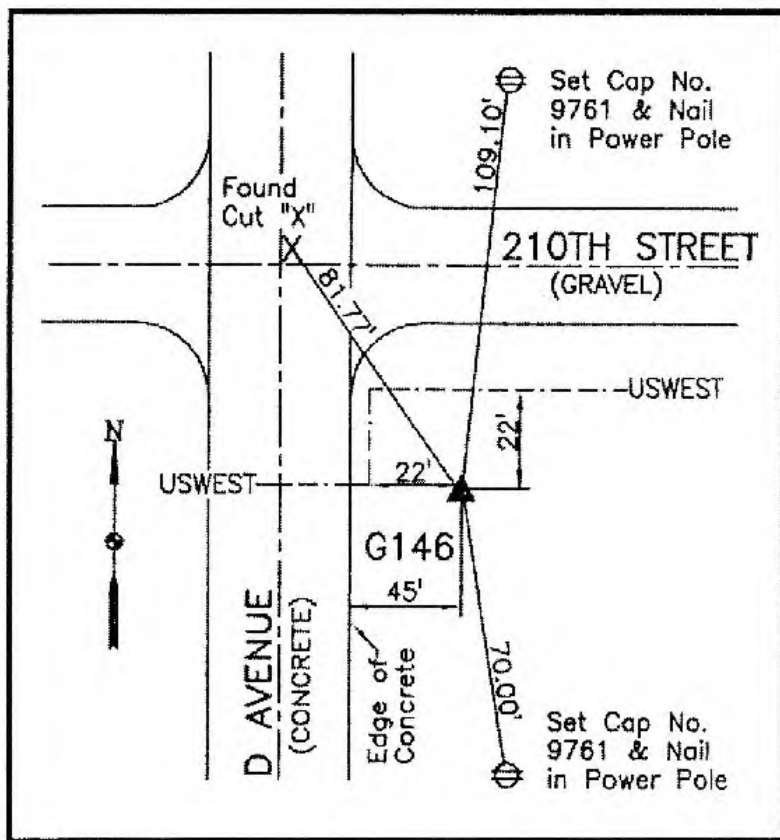
Point Name: **146 (Reset by DCI in 2017)**  
Designation: G146 (set by WHKS in 2001)

NAD 83(NA2011) Latitude: **N41°43'53.94780"** Longitude: **W94°13'18.46508"**  
NAVD 88 Ortho Height: **1041.883sft** Ellip. Ht: **947.871sft** Geoid12B

Iowa South Zone (1402) Northing: **631731.097sft** Easting: **1443400.287sft**  
Mapping Angle: **-0°28'32"** Combination Scale Factor: **0.99994601**

IaRCS Zone 8 Northing: **7540260.607sft** Easting: **18362115.899sft**  
Mapping Angle: **-0°20'10"** Combination Scale Factor: **1.00000950**

**Monument Type:** 5/8" dia. x 6'-0" long alum. rod with cap and NGS style access cover.



**Description:**

Placed 5/8" X 6' - 0" Long Aluminum Rod with Cap Stamped G146 and NGS Style Access Cover 3" Deep.

**Location:**

Southeast corner of intersection of 210th Street (F31) and D Avenue in Section 22, T80N, R29W