

Dallas County, Iowa

Horizontal Datum: **NAD 83(NA2011)** - Vertical Datum: **NAVD 1988**

Iowa State Plane South Zone (1402)

Iowa Regional Coordinate System, Zone 8, Ames-Des Moines TM

US Survey Feet

2018

Point Name: **147**

Designation: G147 (set by WHKS in 2001)

NAD 83(NA2011) Latitude: **N41°43'54.72452"** Longitude: **W94°09'46.01282"**

NAVD 88 Ortho Height: **1000.173sft** Ellip. Ht: **905.098sft** **Geoid12B**

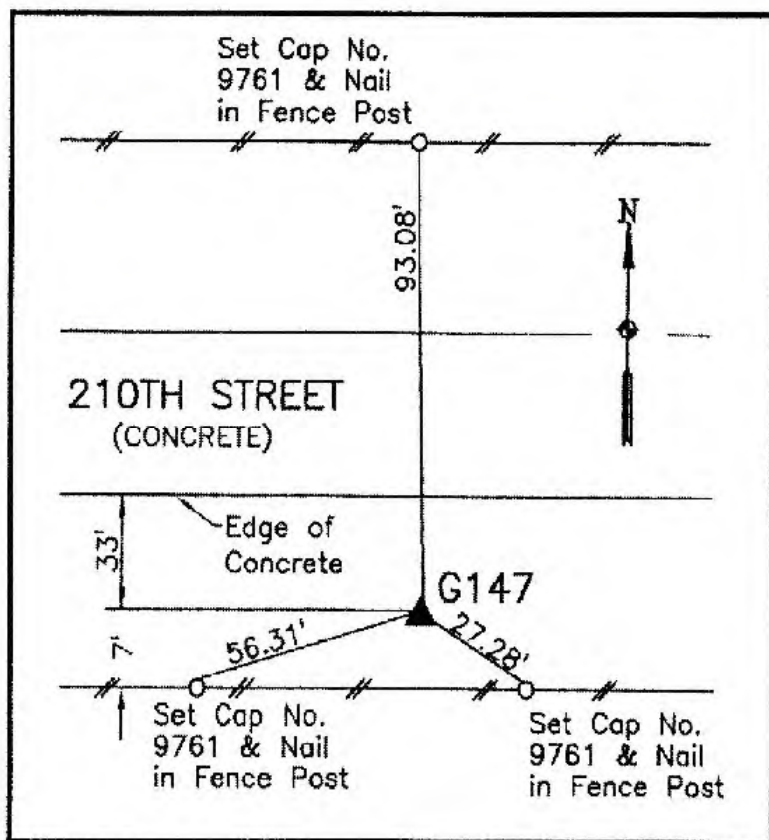
Iowa South Zone (1402) Northing: **631681.511sft** Easting: **1459508.752sft**

Mapping Angle: **-0°26'12"** Combination Scale Factor: **0.99994808**

IaRCS Zone 8 Northing: **7540250.215sft** Easting: **18378225.421sft**

Mapping Angle: **-0°17'49"** Combination Scale Factor: **1.00000676**

Monument Type: 5/8" dia. x 6'-0" long alum. rod with cap and NGS style access cover.



Description:

Placed 5/8" X 6' - 0" Long Aluminum Rod with Cap Stamped G147 and NGS Style Access Cover 3" Deep.

Location:

South side of 210th Street (F31) 0.6 mile east of Fillmore Lane in Section 19, T80N, R28W.

This document was prepared by Dan Corbin, Inc. on March 9, 2018 for Dallas County, Iowa.