

**Dallas County, Iowa**

Horizontal Datum: **NAD 83(NA2011)** - Vertical Datum: **NAVD 1988**  
Iowa State Plane South Zone (1402)  
Iowa Regional Coordinate System, Zone 8, Ames-Des Moines TM  
US Survey Feet  
**2018**

Point Name: **148**

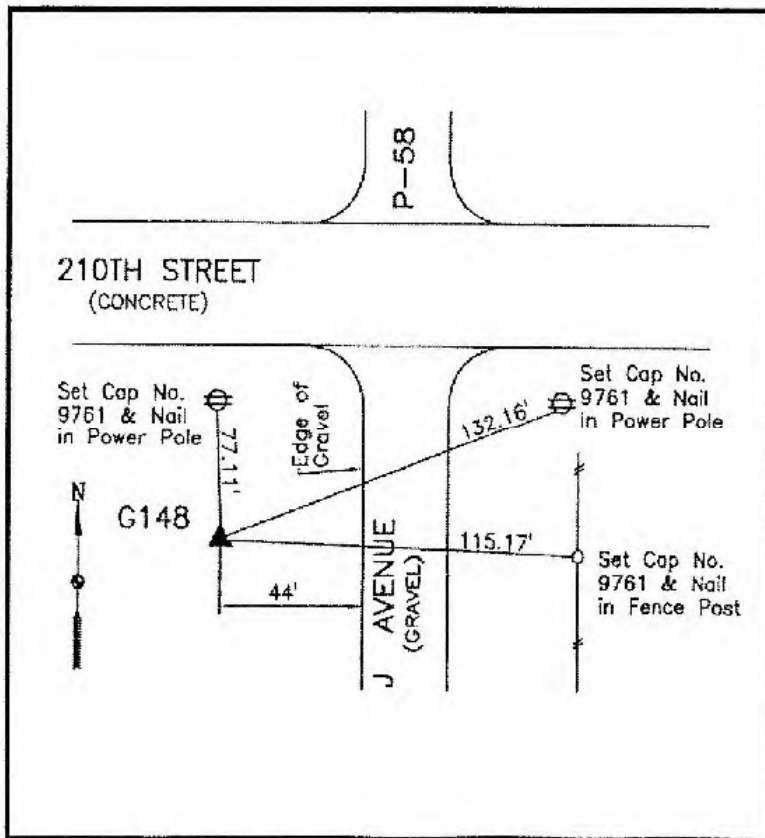
**Designation:** G148 (set by WHKS in 2001)

NAD 83(NA2011) Latitude: **N41°43'53.63771"** Longitude: **W94°06'22.47079"**  
NAVD 88 Ortho Height: **1002.272sft** Ellip. Ht: **906.134sft** **Geoid12B**

**Iowa South Zone (1402)** Northing: **631458.931sft** Easting: **1474940.317sft**  
Mapping Angle: **-0°23'58"** Combination Scale Factor: **0.99994798**

**IaRCS Zone 8** Northing: **7540065.282sft** Easting: **18393658.357sft**  
Mapping Angle: **-0°15'34"** Combination Scale Factor: **1.00000268**

**Monument Type:** 5/8" dia. x 6'-0" long alum. rod with cap and NGS style access cover.



Description:

Placed 5/8" X 6' - 0" Long Aluminum Rod with Cap Stamped G148 and NGS Style Access Cover 3" Deep.

Location:

West side J Avenue (P58) just south of 210th Street (F31) in Section 21, T80N, R28W.

*This document was prepared by Dan Corbin, Inc. on March 9, 2018 for Dallas County, Iowa.*