

**Dallas County, Iowa**

Horizontal Datum: **NAD 83(NA2011)** - Vertical Datum: **NAVD 1988**  
Iowa State Plane South Zone (1402)  
Iowa Regional Coordinate System, Zone 8, Ames-Des Moines TM  
US Survey Feet  
**2018**

Point Name: **149**

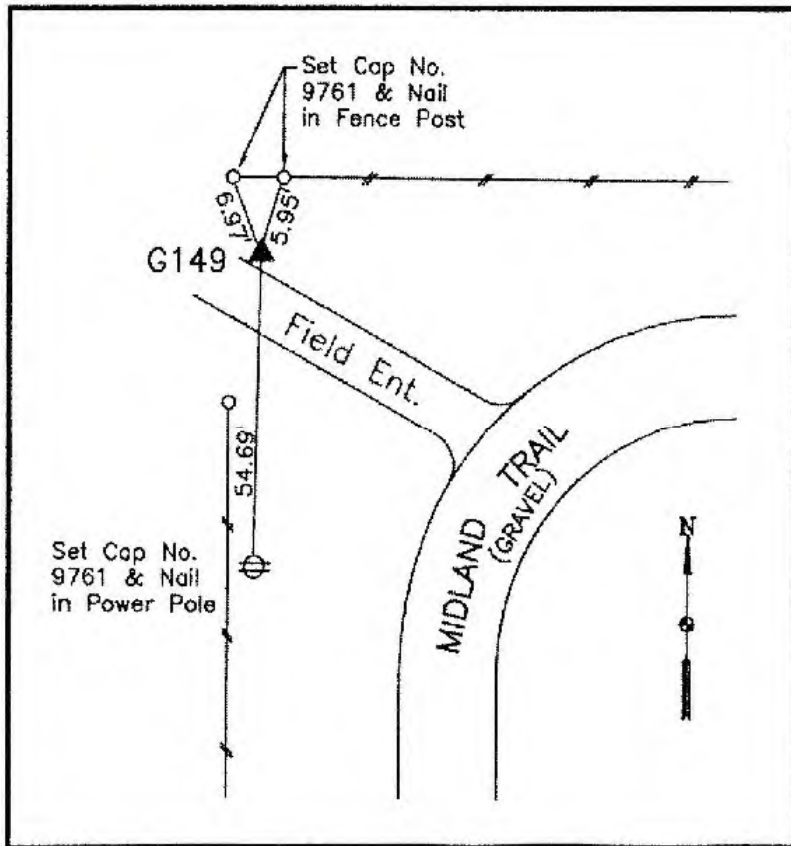
**Designation:** G149 (set by WHKS in 2001)

NAD 83(NA2011) Latitude: **N41°43'55.10537"** Longitude: **W94°02'41.45994"**  
NAVD 88 Ortho Height: **1030.712sft** Ellip. Ht: **933.463sft** **Geoid12B**

**Iowa South Zone (1402)** Northing: **631496.606sft** Easting: **1491698.201sft**  
Mapping Angle: **-0°21'32"** Combination Scale Factor: **0.99994674**

**IaRCS Zone 8** Northing: **7540143.974sft** Easting: **18410416.983sft**  
Mapping Angle: **-0°13'06"** Combination Scale Factor: **0.99999763**

**Monument Type:** 5/8" dia. x 6'-0" long alum. rod with cap and NGS style access cover.



**Description:**

Placed 5/8" X 6' - 0" Long Aluminum Rod with Cap Stamped G149 and NGS Style Access Cover 3" Deep.

**Location:**

Near fence corner at Northwest corner of curve in Midland Trail 0.4 mile west of intersection of Midland Trail and 210th Place (Street) in Section 18, T80N, R27W.