

Dallas County, Iowa

Horizontal Datum: **NAD 83(NA2011)** - Vertical Datum: **NAVD 1988**
Iowa State Plane South Zone (1402)
Iowa Regional Coordinate System, Zone 8, Ames-Des Moines TM
US Survey Feet
2018

Point Name: **150**

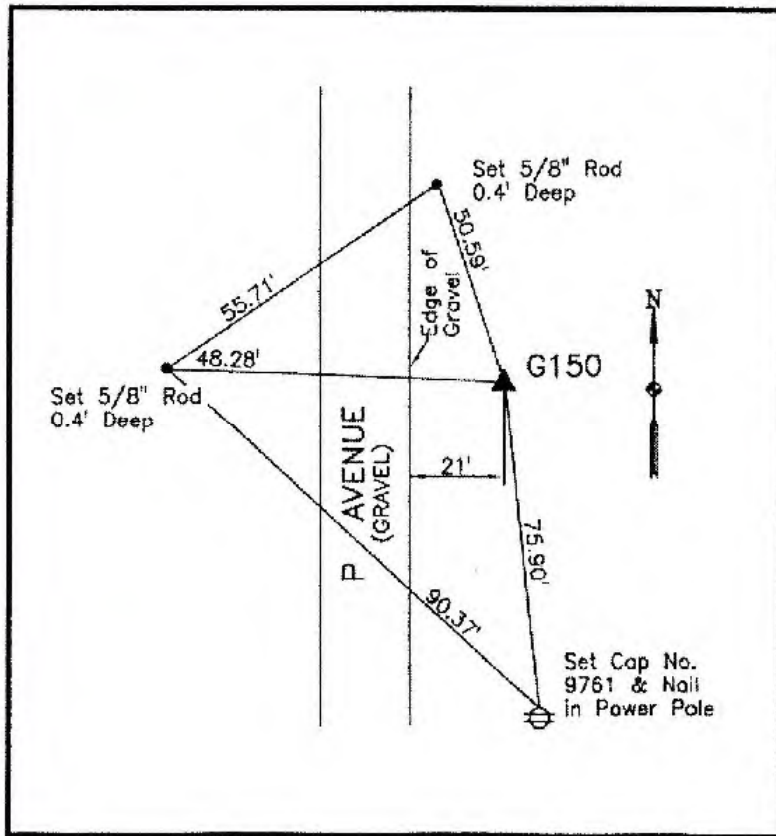
Designation: G150 (set by WHKS in 2001)

NAD 83(NA2011) Latitude: **N41°43'57.52834"** Longitude: **W93°59'21.46487"**
NAVD 88 Ortho Height: **1018.602sft** Ellip. Ht: **920.480sft** **Geoid12B**

Iowa South Zone (1402) Northing: **631651.715sft** Easting: **1506863.096sft**
Mapping Angle: **-0°19'20"** Combination Scale Factor: **0.99994747**

IaRCS Zone 8 Northing: **7540336.314sft** Easting: **18425582.200sft**
Mapping Angle: **-0°10'53"** Combination Scale Factor: **0.99999541**

Monument Type: 5/8" dia. x 6'-0" long alum. rod with cap and NGS style access cover.



Description:

Placed 5/8" X 6' - 0" Long Aluminum Rod with Cap Stamped G150 and NGS Style Access Cover 3 " Deep.

Location:

East side of P Avenue 0.4 mile south of 205th Street in Section 15, T80N, R27W north of address 2113 P Avenue.

This document was prepared by Dan Corbin, Inc. on March 9, 2018 for Dallas County, Iowa.