

Dallas County, Iowa

Horizontal Datum: **NAD 83(NA2011)** - Vertical Datum: **NAVD 1988**
Iowa State Plane South Zone (1402)
Iowa Regional Coordinate System, Zone 8, Ames-Des Moines TM
US Survey Feet
2018

Point Name: **151**

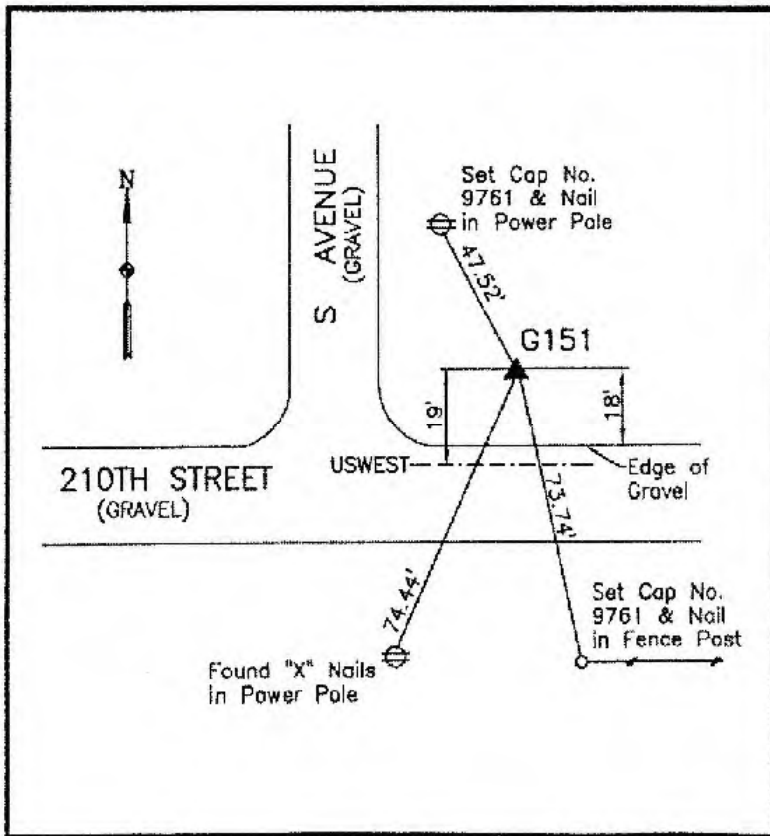
Designation: G151 (set by WHKS in 2001)

NAD 83(NA2011) Latitude: **N41°43'55.02892"** Longitude: **W93°55'50.59175"**
NAVD 88 Ortho Height: **991.128sft** Ellip. Ht: **892.194sft** **Geoid12B**

Iowa South Zone (1402) Northing: **631314.172sft** Easting: **1522850.021sft**
Mapping Angle: **-0°17'01"** Combination Scale Factor: **0.99994871**

IaRCS Zone 8 Northing: **7540038.108sft** Easting: **18441570.655sft**
Mapping Angle: **-0°08'33"** Combination Scale Factor: **0.99999433**

Monument Type: 5/8" dia. x 6'-0" long alum. rod with cap and NGS style access cover.



Description:

Placed 5/8" X 6' - 0" Long
Aluminum Rod with Cap
Stamped G151 and NGS Style
Access Cover 5" Deep.

Location:

Northeast corner of intersection
of 210th Street and S Avenue
in Section 18, T80N, R26W

This document was prepared by Dan Corbin, Inc. on March 9, 2018 for Dallas County, Iowa.