

Dallas County, Iowa

Horizontal Datum: **NAD 83(NA2011)** - Vertical Datum: **NAVD 1988**
Iowa State Plane South Zone (1402)
Iowa Regional Coordinate System, Zone 8, Ames-Des Moines TM
US Survey Feet
2018

Point Name: **152**

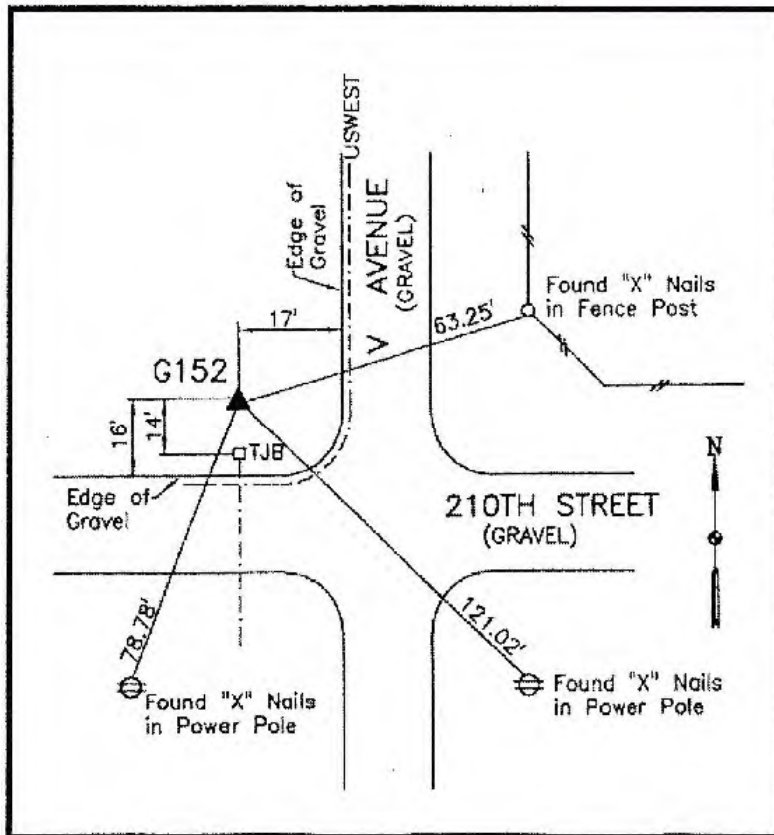
Designation: G152 (set by WHKS in 2001)

NAD 83(NA2011) Latitude: **N41°43'55.08079"** Longitude: **W93°52'22.52983"**
NAVD 88 Ortho Height: **1024.598sft** Ellip. Ht: **924.980sft** **Geoid12B**

Iowa South Zone (1402) Northing: **631246.547sft** Easting: **1538625.299sft**
Mapping Angle: **-0°14'44"** Combination Scale Factor: **0.99994715**

IaRCS Zone 8 Northing: **7540009.422sft** Easting: **18457346.756sft**
Mapping Angle: **-0°06'14"** Combination Scale Factor: **0.99999094**

Monument Type: 5/8" dia. x 6'-0" long alum. rod with cap and NGS style access cover.



Description:

Placed 5/8" X 6' - 0" Long Aluminum Rod with Cap Stamped G152 and NGS Style Access Cover 2" Deep.

Location:

Northwest corner of intersection of 210th Street and V Avenue in Section 16, T80N, R26W at address 3089 210th Street.