

Dallas County, Iowa

Horizontal Datum: **NAD 83(NA2011)** - Vertical Datum: **NAVD 1988**
Iowa State Plane South Zone (1402)
Iowa Regional Coordinate System, Zone 8, Ames-Des Moines TM
US Survey Feet
2018

Point Name: **153**

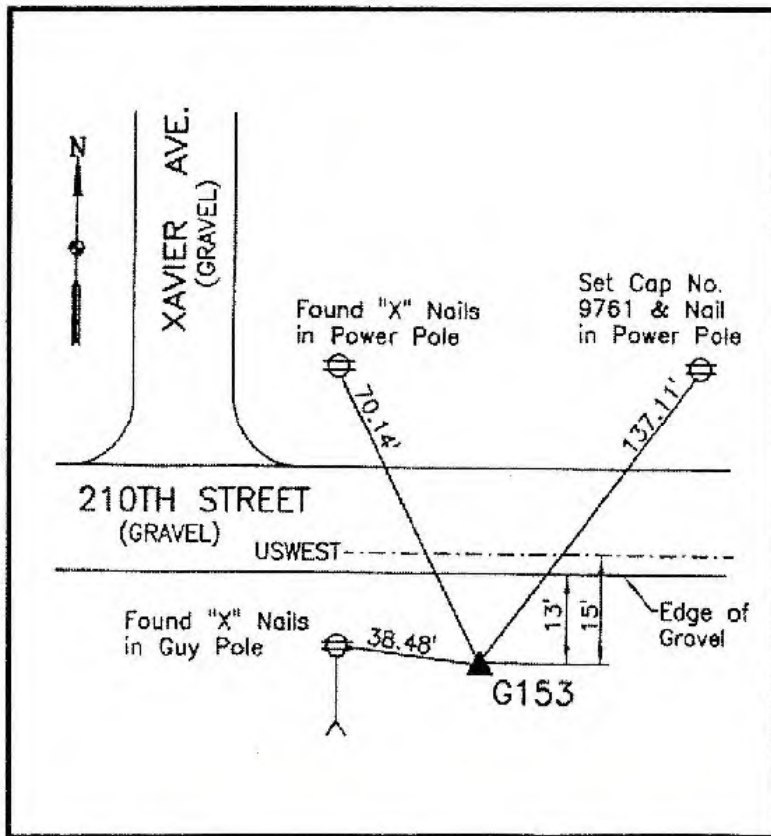
Designation: G153 (set by WHKS in 2001)

NAD 83(NA2011) Latitude: **N41°43'54.92004"** Longitude: **W93°49'26.46959"**
NAVD 88 Ortho Height: **853.035sft** Ellip. Ht: **752.857sft** **Geoid12B**

Iowa South Zone (1402) Northing: **631176.798sft** Easting: **1551974.158sft**
Mapping Angle: **-0°12'48"** Combination Scale Factor: **0.99995535**

IaRCS Zone 8 Northing: **7539972.709sft** Easting: **18470696.324sft**
Mapping Angle: **-0°04'17"** Combination Scale Factor: **0.99999806**

Monument Type: 5/8" dia. x 6'-0" long alum. rod with cap and NGS style access cover.



Description:

Placed 5/8" X 6' - 0" Long Aluminum Rod with Cap Stamped G153 and NGS Style Access Cover 4 " Deep.

Location:

Southeast corner of intersection of 210th Street and Xavier Avenue in Section 24, T80N, R26W.