

Dallas County, Iowa

Horizontal Datum: **NAD 83(NA2011)** - Vertical Datum: **NAVD 1988**
Iowa State Plane South Zone (1402)
Iowa Regional Coordinate System, Zone 8, Ames-Des Moines TM
US Survey Feet
2018

Point Name: **154**

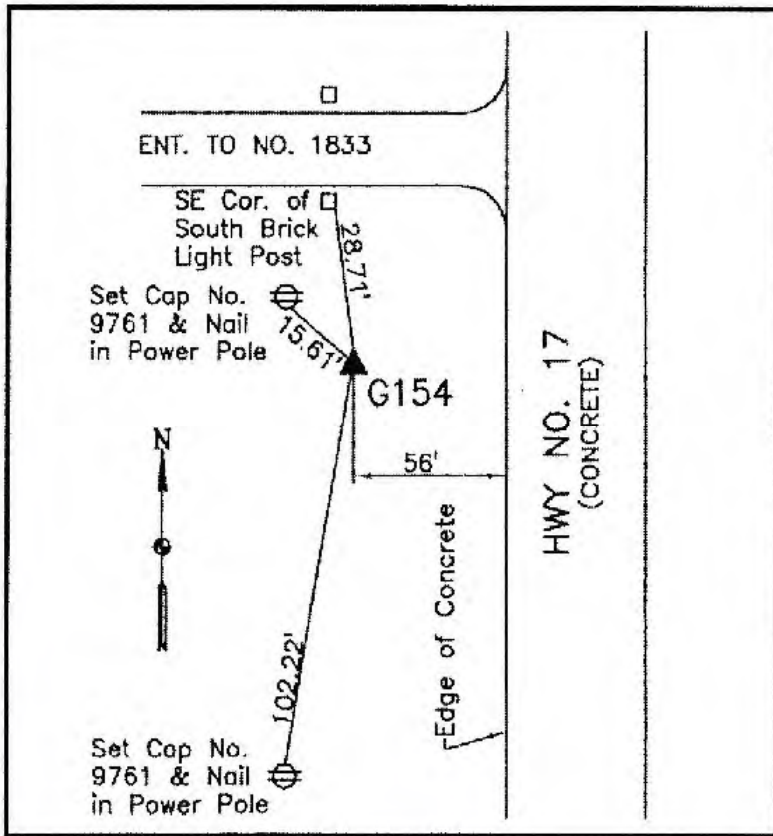
Designation: G154 (set by WHKS in 2001)

NAD 83(NA2011) Latitude: **N41°46'17.21112"** Longitude: **W93°48'54.02424"**
NAVD 88 Ortho Height: **952.818sft** Ellip. Ht: **853.098sft** **Geoid12B**

Iowa South Zone (1402) Northing: **645570.494sft** Easting: **1554486.335sft**
Mapping Angle: **-0°12'27"** Combination Scale Factor: **0.99995721**

IaRCS Zone 8 Northing: **7554373.153sft** Easting: **18473172.923sft**
Mapping Angle: **-0°03'56"** Combination Scale Factor: **0.99999312**

Monument Type: 5/8" dia. x 6'-0" long alum. rod with cap and NGS style access cover.



Description:

Placed 5/8" X 6' - 0" Long
Aluminum Rod with Cap
Stamped G154 and NGS Style
Access Cover 2 " Deep.

Location:

West side Iowa Highway 17 0.5
mile north of 190th Street (NW
110th Ave., Polk County) in
Section 1, T80N, R26W near
address 1833 Highway 17.
Highway 17 stationing is about
73+00.

This document was prepared by Dan Corbin, Inc. on March 9, 2018 for Dallas County, Iowa.