

Dallas County, Iowa

Horizontal Datum: **NAD 83(NA2011)** - Vertical Datum: **NAVD 1988**
Iowa State Plane South Zone (1402)
Iowa Regional Coordinate System, Zone 8, Ames-Des Moines TM
US Survey Feet
2018

Point Name: **155**

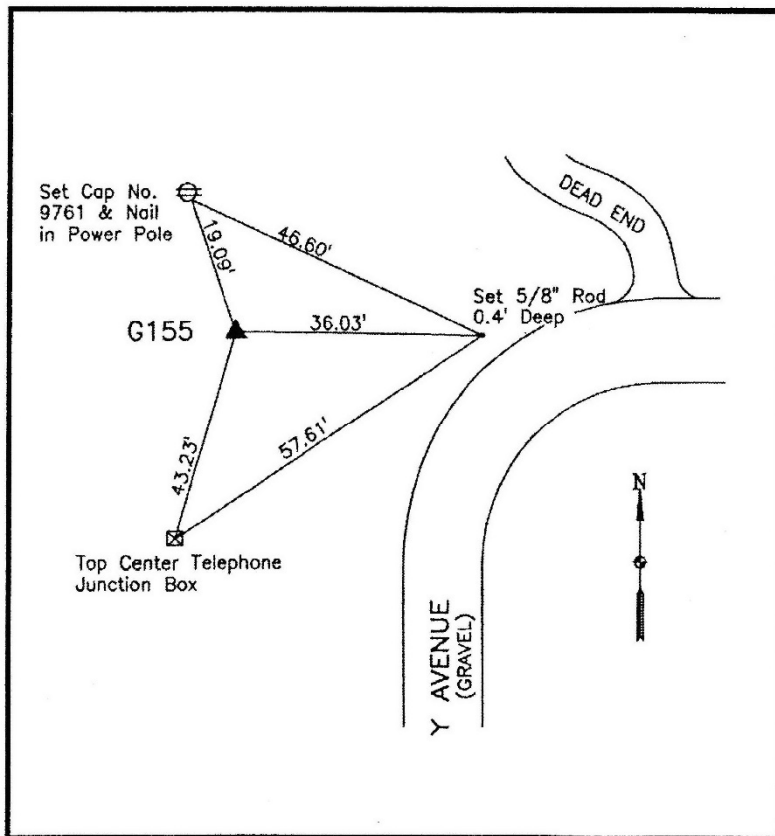
Designation: G155 (set by WHKS in 2001)

NAD 83(NA2011) Latitude: **N41°46'53.43711"** Longitude: **W93°52'23.29036"**
NAVD 88 Ortho Height: **876.643sft** Ellip. Ht: **777.757sft** **Geoid12B**

Iowa South Zone (1402) Northing: **649300.042sft** Easting: **1538645.080sft**
Mapping Angle: **-0°14'45"** Combination Scale Factor: **0.99996257**

IaRCS Zone 8 Northing: **7558063.627sft** Easting: **18457321.924sft**
Mapping Angle: **-0°06'15"** Combination Scale Factor: **0.99999797**

Monument Type: 5/8" dia. x 6'-0" long alum. rod with cap and NGS style access cover.



Description:

Placed 5/8" X 6' - 0" Long
Aluminum Rod with Cap
Stamped G155 and NGS Style
Access Cover 2 " Deep.

Location:

West side V Avenue 0.3 mile
north of Beaver Creek Bridge
in Section 33, T81N, R26W.