

Dallas County, Iowa

Horizontal Datum: **NAD 83(NA2011)** - Vertical Datum: **NAVD 1988**
Iowa State Plane South Zone (1402)
Iowa Regional Coordinate System, Zone 8, Ames-Des Moines TM
US Survey Feet
2018

Point Name: **156**

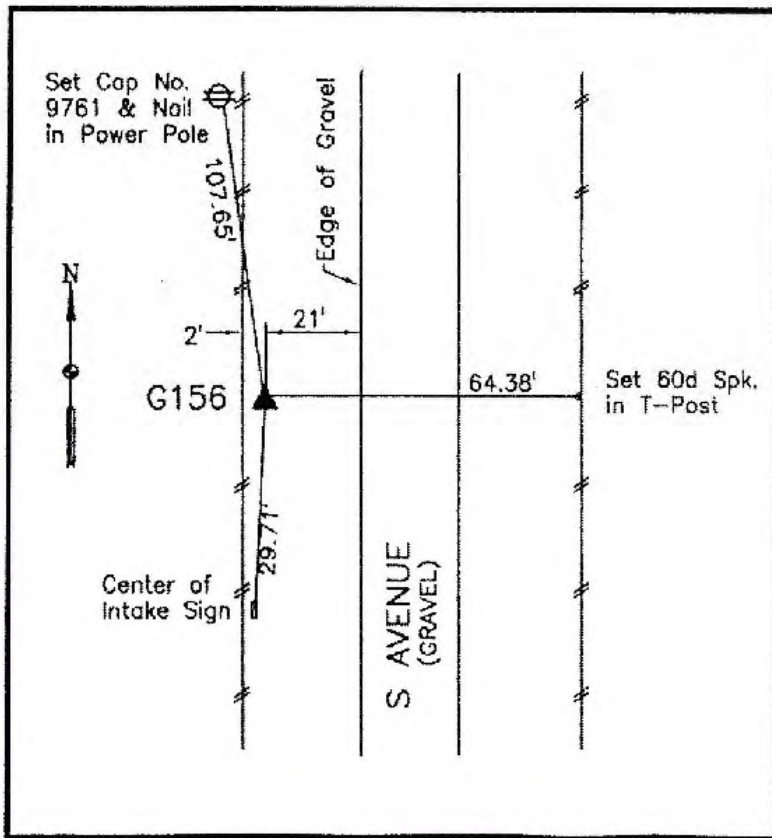
Designation: G156 (set by WHKS in 2001)

NAD 83(NA2011) Latitude: **N41°46'41.27465"** Longitude: **W93°55'51.83614"**
NAVD 88 Ortho Height: **979.462sft** Ellip. Ht: **881.290sft** **Geoid12B**

Iowa South Zone (1402) Northing: **648141.990sft** Easting: **1522839.064sft**
Mapping Angle: **-0°17'02"** Combination Scale Factor: **0.99995703**

IaRCS Zone 8 Northing: **7556866.550sft** Easting: **18441518.235sft**
Mapping Angle: **-0°08'34"** Combination Scale Factor: **0.99999486**

Monument Type: 5/8" dia. x 6'-0" long alum. rod with cap and NGS style access cover.



Description:

Placed 5/8" X 6' - 0" Long
Aluminum Rod with Cap
Stamped G156 and NGS Style
Access Cover 3" Deep.

Location:

West side S Avenue 0.1 mile
north of 180th Street in Section
36, T81N, R27W.

This document was prepared by Dan Corbin, Inc. on March 9, 2018 for Dallas County, Iowa.