

**Dallas County, Iowa**

Horizontal Datum: **NAD 83(NA2011)** - Vertical Datum: **NAVD 1988**  
Iowa State Plane South Zone (1402)  
Iowa Regional Coordinate System, Zone 8, Ames-Des Moines TM  
US Survey Feet  
**2018**

Point Name: **157**

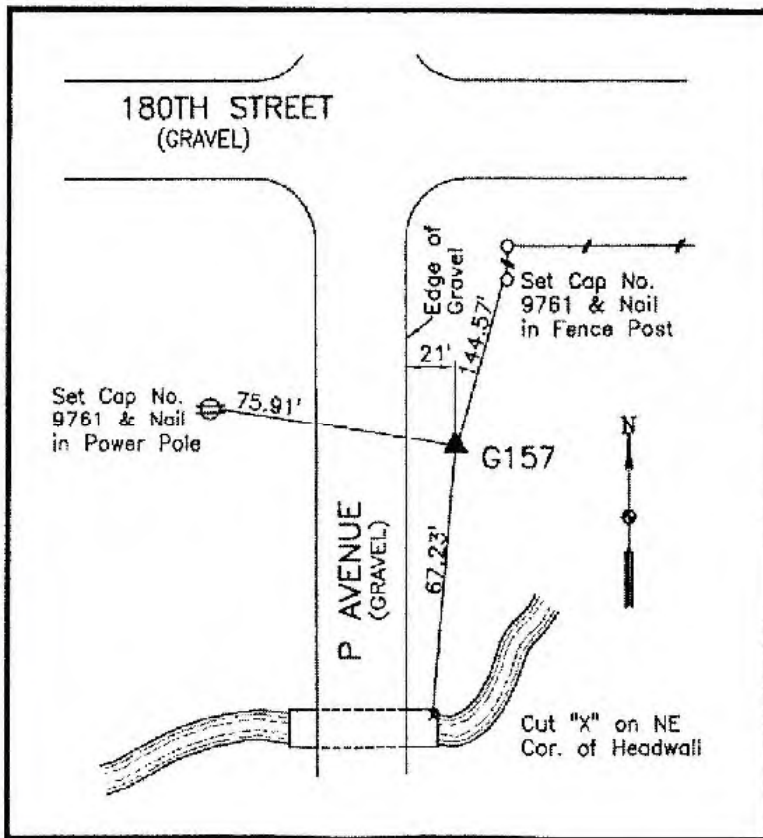
**Designation:** G157 (set by WHKS in 2001)

NAD 83(NA2011) Latitude: **N41°46'34.93125"** Longitude: **W93°59'20.60894"**  
NAVD 88 Ortho Height: **953.358sft** Ellip. Ht: **856.023sft** **Geoid12B**

**Iowa South Zone (1402)** Northing: **647583.573sft** Easting: **1507017.572sft**  
Mapping Angle: **-0°19'20"** Combination Scale Factor: **0.99995793**

**IaRCS Zone 8** Northing: **7556269.209sft** Easting: **18425697.544sft**  
Mapping Angle: **-0°10'53"** Combination Scale Factor: **0.99999846**

**Monument Type:** 5/8" dia. x 6'-0" long alum. rod with cap and NGS style access cover.



**Description:**

Placed 5/8" X 6' - 0" Long  
Aluminum Rod with Cap  
Stamped G157 and NGS Style  
Access Cover 1 " Deep.

**Location:**

East side P Avenue just south  
of 180th Street in Section 3,  
T80N, R27W near creek.