

Dallas County, Iowa

Horizontal Datum: **NAD 83(NA2011)** - Vertical Datum: **NAVD 1988**
Iowa State Plane South Zone (1402)
Iowa Regional Coordinate System, Zone 8, Ames-Des Moines TM
US Survey Feet
2018

Point Name: **158**

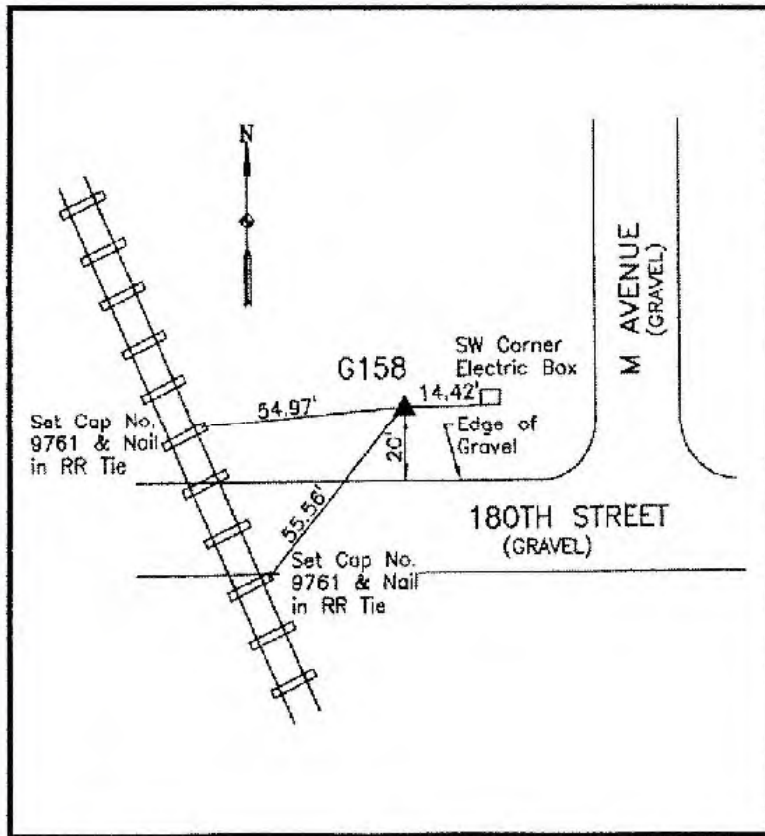
Designation: FBN control station "X 3" PID: MJ0074

NAD 83(NA2011) Latitude: **N41°46'37.16491"** Longitude: **W94°02'54.25408"**
NAVD 88 Ortho Height: **1026.359sft** Ellip. Ht: **930.050sft** **Geoid12B**

Iowa South Zone (1402) Northing: **647906.200sft** Easting: **1490831.580sft**
Mapping Angle: **-0°21'40"** Combination Scale Factor: **0.99995450**

IaRCS Zone 8 Northing: **7556552.171sft** Easting: **18409510.131sft**
Mapping Angle: **-0°13'16"** Combination Scale Factor: **0.99999798**

Monument Type: CGS bench mark disk set in the top of concrete monument.



Description:

Found USCGS Concrete Monument with Disk Stamped 1026.205 X3 1930, at Ground Level.

Location:

Harn station USCGS BM X 3, 1930, north side 180th Street along east railroad right of way at intersection of M Avenue. In Section 36, T81N, R28W.