

**Dallas County, Iowa**

Horizontal Datum: **NAD 83(NA2011)** - Vertical Datum: **NAVD 1988**  
Iowa State Plane South Zone (1402)  
Iowa Regional Coordinate System, Zone 8, Ames-Des Moines TM  
US Survey Feet  
**2018**

Point Name: **159**

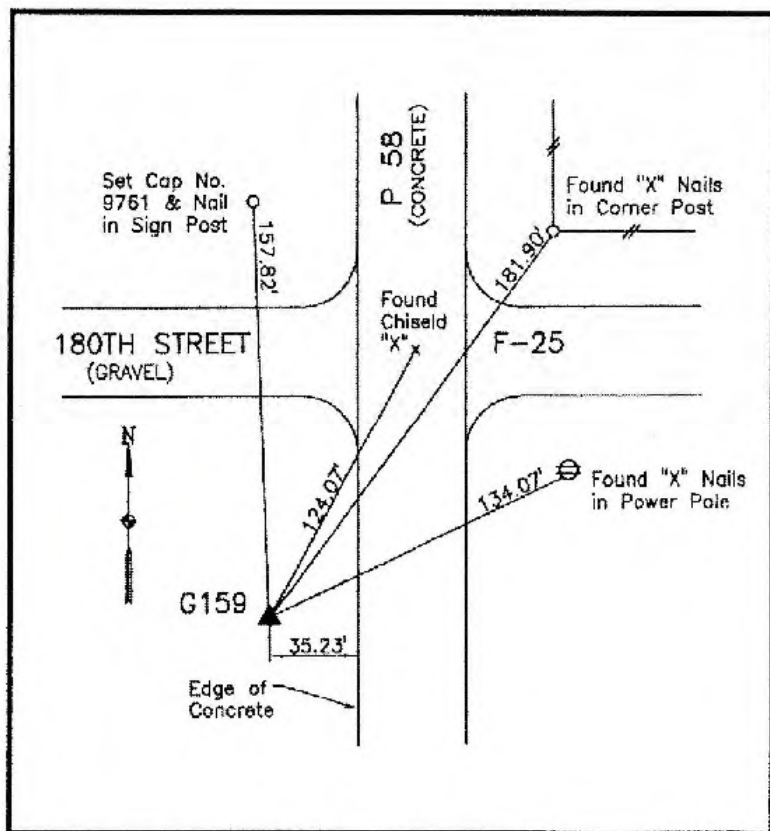
**Designation:** G159 (set by WHKS in 2001)

NAD 83(NA2011) Latitude: **N41°46'35.42782"** Longitude: **W94°06'22.42149"**  
NAVD 88 Ortho Height: **989.282sft** Ellip. Ht: **894.003sft** **Geoid12B**

**Iowa South Zone (1402)** Northing: **647835.056sft** Easting: **1475058.190sft**  
Mapping Angle: **-0°23'58"** Combination Scale Factor: **0.99995614**

**IaRCS Zone 8** Northing: **7556442.480sft** Easting: **18393736.249sft**  
Mapping Angle: **-0°15'34"** Combination Scale Factor: **1.00000324**

**Monument Type:** 5/8" dia. x 6'-0" long alum. rod with cap and NGS style access cover.



**Description:**

Placed 5/8" X 6' - 0" Long  
Aluminum Rod with Cap  
Stamped G159 and NGS Style  
Access Cover 2" Deep.

**Location:**

West side of J Avenue (P58)  
just south of 180th Street (F25)  
in Section 4, T80N, R28W.