

Dallas County, Iowa

Horizontal Datum: **NAD 83(NA2011)** - Vertical Datum: **NAVD 1988**
Iowa State Plane South Zone (1402)
Iowa Regional Coordinate System, Zone 8, Ames-Des Moines TM
US Survey Feet
2018

Point Name: **160**

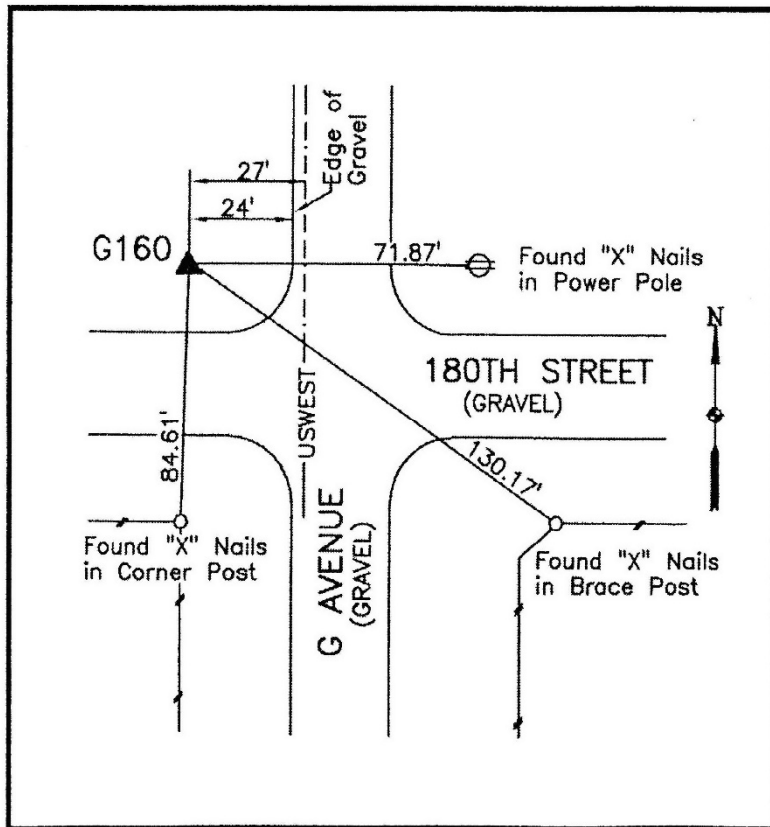
Designation: G160 (set by WHKS in 2001)

NAD 83(NA2011) Latitude: **N41°46'36.60511"** Longitude: **W94°09'51.40937"**
NAVD 88 Ortho Height: **1017.499sft** Ellip. Ht: **923.273sft** **Geoid12B**

Iowa South Zone (1402) Northing: **648069.864sft** Easting: **1459224.727sft**
Mapping Angle: **-0°26'15"** Combination Scale Factor: **0.99995480**

IaRCS Zone 8 Northing: **7556638.730sft** Easting: **18377901.483sft**
Mapping Angle: **-0°17'54"** Combination Scale Factor: **1.00000598**

Monument Type: 5/8" dia. x 6'-0" long alum. rod with cap and NGS style access cover.



Description:

Placed 5/8" X 6' - 0" Long
Aluminum Rod with Cap
Stamped G160 and NGS Style
Access Cover 3 " Deep.

Location:

Northwest corner of
intersection 180th Street (F25)
and G Avenue in Section 36,
T81N, R29W.