

Dallas County, Iowa

Horizontal Datum: **NAD 83(NA2011)** - Vertical Datum: **NAVD 1988**
Iowa State Plane South Zone (1402)
Iowa Regional Coordinate System, Zone 8, Ames-Des Moines TM
US Survey Feet
2018

Point Name: **161**

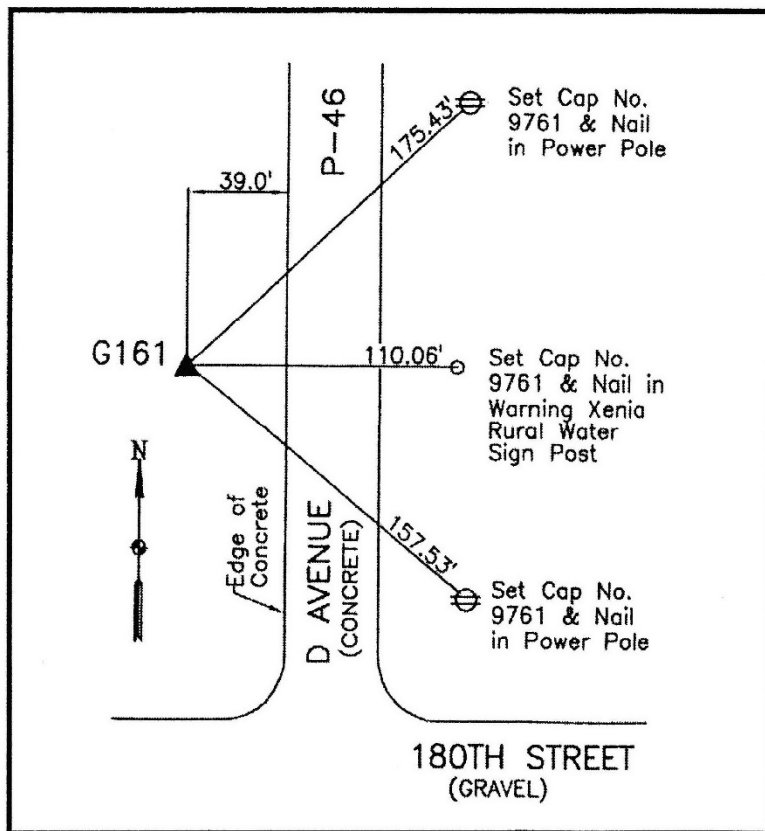
Designation: G161 (set by WHKS in 2001)

NAD 83(NA2011) Latitude: **N41°46'38.40905"** Longitude: **W94°13'20.14727"**
NAVD 88 Ortho Height: **1049.833sft** Ellip. Ht: **956.588sft** **Geoid12B**

Iowa South Zone (1402) Northing: **648378.510sft** Easting: **1443410.971sft**
Mapping Angle: **-0°28'33"** Combination Scale Factor: **0.99995330**

IaRCS Zone 8 Northing: **7556908.990sft** Easting: **18362086.179sft**
Mapping Angle: **-0°20'13"** Combination Scale Factor: **1.00000909**

Monument Type: 5/8" dia. x 6'-0" long alum. rod with cap and NGS style access cover.



Description:

Placed 5/8" X 6' - 0" Long Aluminum Rod with Cap Stamped G161 and NGS Style Access Cover 1 " Deep.

Location:

West side of D Avenue (P46) just north of 180th Street (F25) in Section 33, T81N, R29W.