

Dallas County, Iowa

Horizontal Datum: **NAD 83(NA2011)** - Vertical Datum: **NAVD 1988**
Iowa State Plane South Zone (1402)
Iowa Regional Coordinate System, Zone 8, Ames-Des Moines TM
US Survey Feet
2018

Point Name: **162**

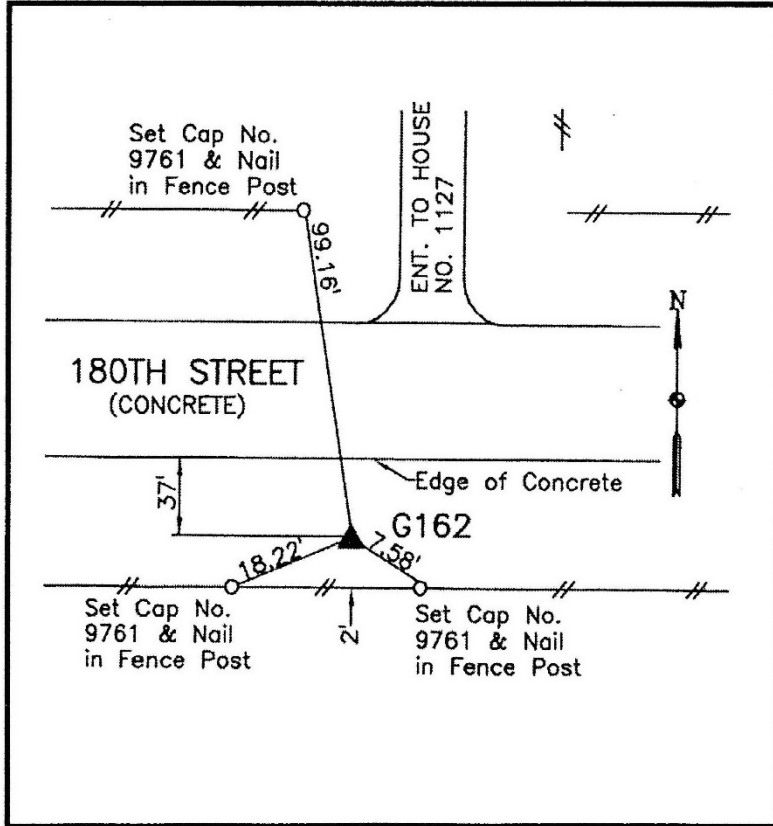
Designation: G162 (set by WHKS in 2001)

NAD 83(NA2011) Latitude: **N41°46'35.15121"** Longitude: **W94°16'41.14396"**
NAVD 88 Ortho Height: **1051.437sft** Ellip. Ht: **959.028sft** **Geoid12B**

Iowa South Zone (1402) Northing: **648180.099sft** Easting: **1428179.471sft**
Mapping Angle: **-0°30'45"** Combination Scale Factor: **0.99995302**

IaRCS Zone 8 Northing: **7556673.696sft** Easting: **18346854.315sft**
Mapping Angle: **-0°22'27"** Combination Scale Factor: **1.00001404**

Monument Type: 5/8" dia. x 6'-0" long alum. rod with cap and NGS style access cover.



Description:

Placed 5/8" X 6' - 0" Long
Aluminum Rod with Cap
Stamped G162 and NGS Style
Access Cover 4 " Deep.

Location:

South side of 180th Street
(F25) next to right of way fence
opposite driveway to address
1072 180th Street,
approximately 1/4 mile east of
west county line, in Section 6,
T80N, R29W.