

Dallas County, Iowa

Horizontal Datum: **NAD 83(NA2011)** - Vertical Datum: **NAVD 1988**
Iowa State Plane South Zone (1402)
Iowa Regional Coordinate System, Zone 8, Ames-Des Moines TM
US Survey Feet
2018

Point Name: **163**

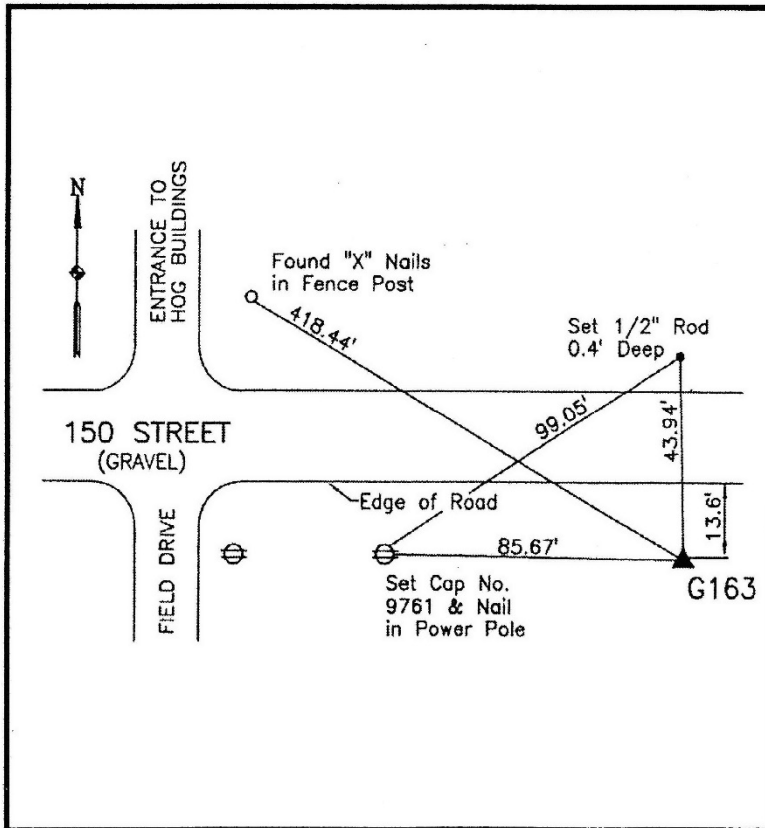
Designation: G163 (set by WHKS in 2001)

NAD 83(NA2011) Latitude: **N41°49'11.03412"** Longitude: **W94°16'44.69437"**
NAVD 88 Ortho Height: **1046.054sft** Ellip. Ht: **954.324sft** **Geoid12B**

Iowa South Zone (1402) Northing: **663960.734sft** Easting: **1428051.795sft**
Mapping Angle: **-0°30'47"** Combination Scale Factor: **0.99996113**

IaRCS Zone 8 Northing: **7572454.879sft** Easting: **18346688.532sft**
Mapping Angle: **-0°22'30"** Combination Scale Factor: **1.00001432**

Monument Type: 5/8" dia. x 6'-0" long alum. rod with cap and NGS style access cover.



Description:

Placed 5/8" X 6' - 0" Long Aluminum Rod with Cap Stamped G163 and NGS Style Access Cover 5 " Deep.

Location:

South side 150th Street about 0.1 mile east of west county line in Section 19, T81N, R29W.