

Dallas County, Iowa

Horizontal Datum: **NAD 83(NA2011)** - Vertical Datum: **NAVD 1988**
Iowa State Plane South Zone (1402)
Iowa Regional Coordinate System, Zone 8, Ames-Des Moines TM
US Survey Feet
2018

Point Name: **164**

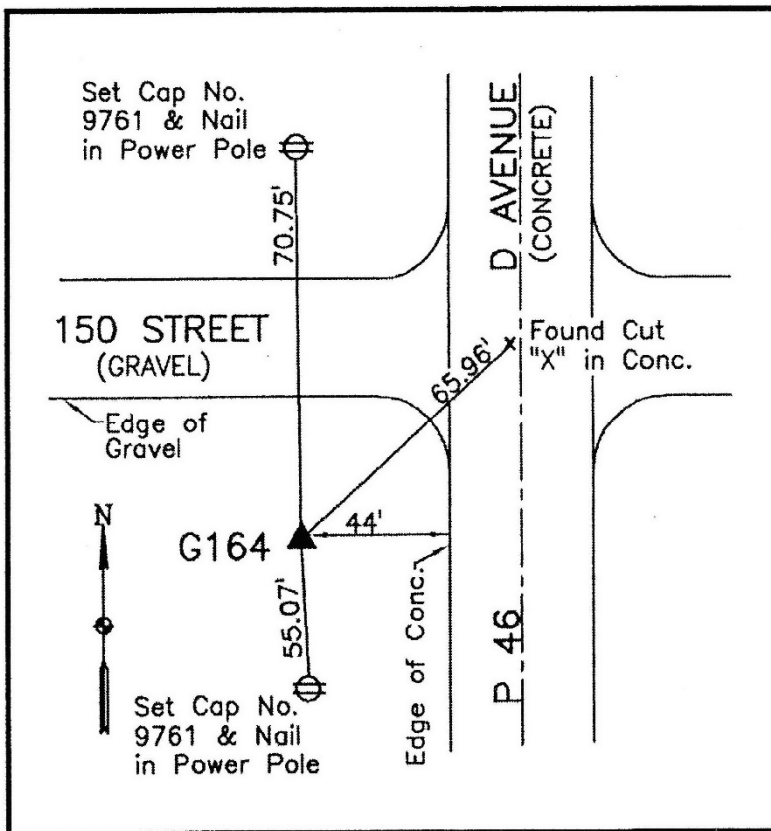
Designation: G164 (set by WHKS in 2001)

NAD 83(NA2011) Latitude: **N41°49'11.88512"** Longitude: **W94°13'20.79985"**
NAVD 88 Ortho Height: **1028.624sft** Ellip. Ht: **936.115sft** **Geoid12B**

Iowa South Zone (1402) Northing: **663913.620sft** Easting: **1443490.556sft**
Mapping Angle: **-0°28'33"** Combination Scale Factor: **0.99996204**

IaRCS Zone 8 Northing: **7572445.055sft** Easting: **18362128.142sft**
Mapping Angle: **-0°20'14"** Combination Scale Factor: **1.00001005**

Monument Type: 5/8" dia. x 6'-0" long alum. rod with cap and NGS style access cover.



Description:

Placed 5/8" X 6' - 0" Long
Aluminum Rod with Cap
Stamped G164 and NGS Style
Access Cover 4" Deep.

Location:

Southwest corner of
intersection 150th Street and D
Avenue (P46) in Section 21,
T81N, R29W.