

Dallas County, Iowa

Horizontal Datum: **NAD 83(NA2011)** - Vertical Datum: **NAVD 1988**
Iowa State Plane South Zone (1402)
Iowa Regional Coordinate System, Zone 8, Ames-Des Moines TM
US Survey Feet
2018

Point Name: **165**

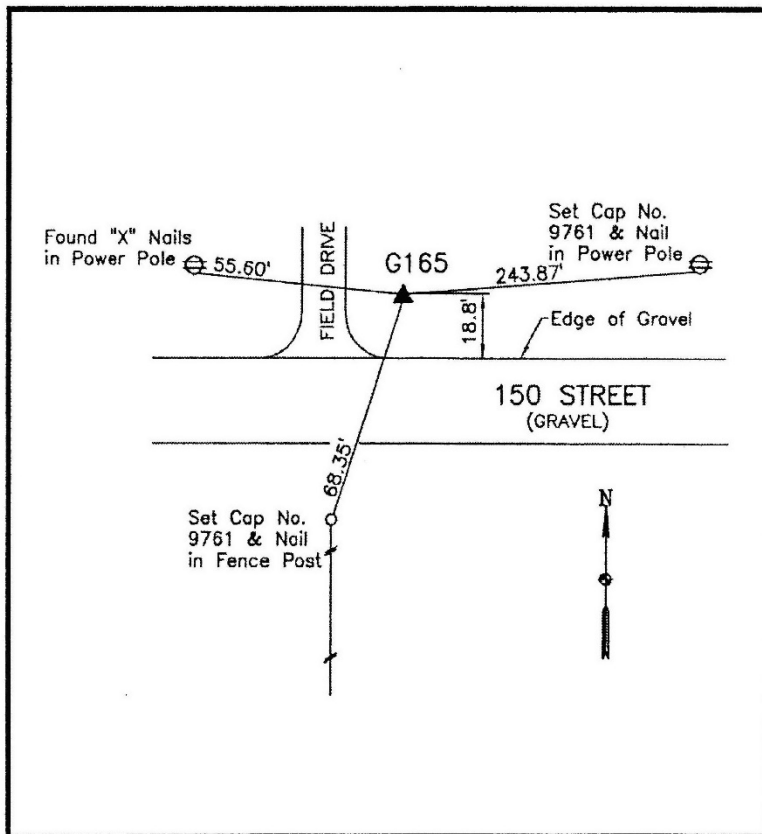
Designation: G165 (set by WHKS in 2001)

NAD 83(NA2011) Latitude: **N41°49'12.80930"** Longitude: **W94°09'51.20312"**
NAVD 88 Ortho Height: **1009.703sft** Ellip. Ht: **916.295sft** **Geoid12B**

Iowa South Zone (1402) Northing: **663880.667sft** Easting: **1459361.092sft**
Mapping Angle: **-0°26'15"** Combination Scale Factor: **0.99996304**

IaRCS Zone 8 Northing: **7572450.564sft** Easting: **18377999.435sft**
Mapping Angle: **-0°17'54"** Combination Scale Factor: **1.00000629**

Monument Type: 5/8" dia. x 6'-0" long alum. rod with cap and NGS style access cover.



Description:

Placed 5/8" X 6' - 0" Long
Aluminum Rod with Cap
Stamped G165 and NGS Style
Access Cover 1" Deep.

Location:

Northside 150th Street at
Dallas/Spring Valley township
line in Section 18, T81N,
R28W.