

Dallas County, Iowa

Horizontal Datum: **NAD 83(NA2011)** - Vertical Datum: **NAVD 1988**
Iowa State Plane South Zone (1402)
Iowa Regional Coordinate System, Zone 8, Ames-Des Moines TM
US Survey Feet
2018

Point Name: **166**

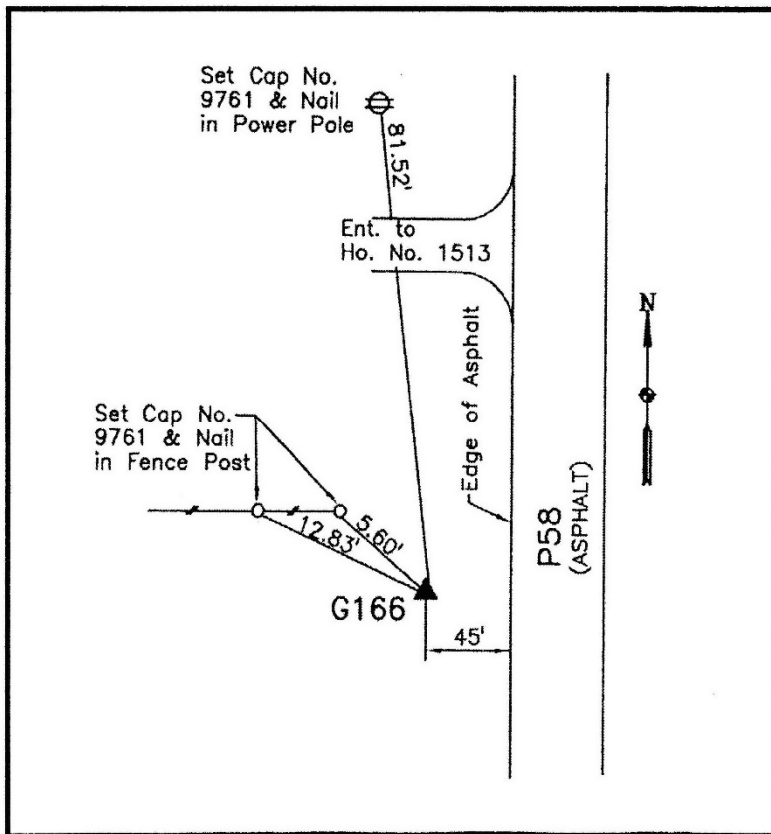
Designation: G166 (set by WHKS in 2001)

NAD 83(NA2011) Latitude: **N41°49'10.01049"** Longitude: **W94°06'23.67239"**
NAVD 88 Ortho Height: **954.524sft** Ellip. Ht: **860.130sft** **Geoid12B**

Iowa South Zone (1402) Northing: **663482.582sft** Easting: **1475072.528sft**
Mapping Angle: **-0°23'58"** Combination Scale Factor: **0.99996557**

IaRCS Zone 8 Northing: **7572090.672sft** Easting: **18393712.440sft**
Mapping Angle: **-0°15'36"** Combination Scale Factor: **1.00000487**

Monument Type: 5/8" dia. x 6'-0" long alum. rod with cap and NGS style access cover.



Description:

Placed 5/8" X 6' - 0" Long Aluminum Rod with Cap Stamped G166 and NGS Style Access Cover 4 " Deep.

Location:

West side J Avenue (P58) 0.1 mile south of 150th Street in Section 21, T81N, R28W and near south fence at address 1513 150th Street.