

**Dallas County, Iowa**

Horizontal Datum: **NAD 83(NA2011)** - Vertical Datum: **NAVD 1988**  
Iowa State Plane South Zone (1402)  
Iowa Regional Coordinate System, Zone 8, Ames-Des Moines TM  
US Survey Feet  
**2018**

Point Name: **167**

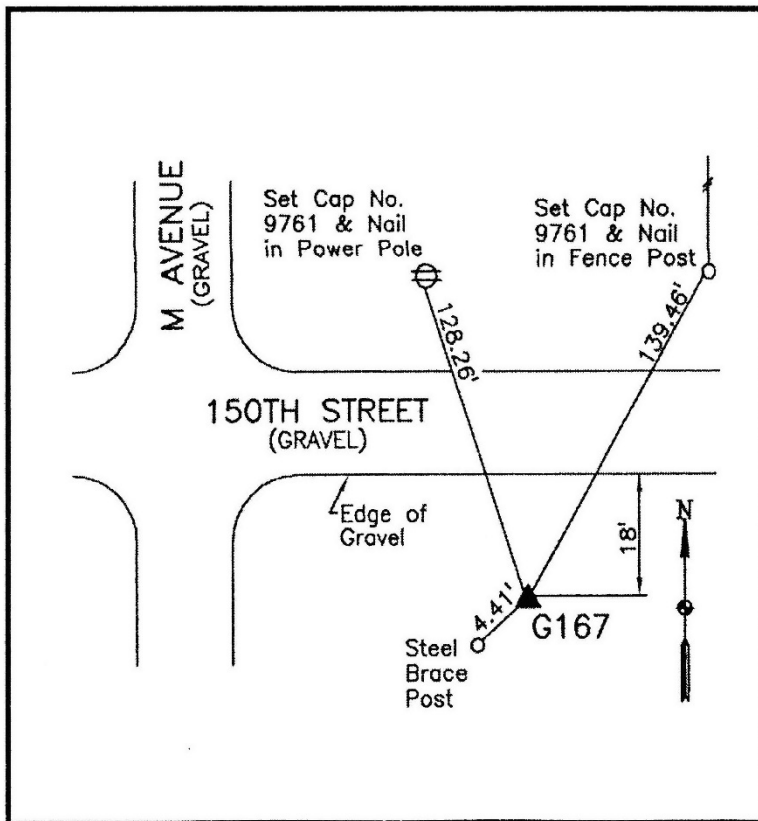
**Designation:** G167 (set by WHKS in 2001)

NAD 83(NA2011) Latitude: **N41°49'12.83823"** Longitude: **W94°02'49.44639"**  
NAVD 88 Ortho Height: **981.328sft** Ellip. Ht: **885.927sft** **Geoid12B**

**Iowa South Zone (1402)** Northing: **663661.242sft** Easting: **1491294.949sft**  
Mapping Angle: **-0°21'37"** Combination Scale Factor: **0.99996449**

**IaRCS Zone 8** Northing: **7572308.922sft** Easting: **18409934.983sft**  
Mapping Angle: **-0°13'13"** Combination Scale Factor: **1.00000000**

**Monument Type:** 5/8" dia. x 6'-0" long alum. rod with cap and NGS style access cover.



Description:

Placed 5/8" X 6' - 0" Long  
Aluminum Rod with Cap  
Stamped G167 and NGS Style  
Access Cover 4 " Deep.

Location:

South side 150th Street just  
east of M Avenue near corner  
of cultivated field in Section 19,  
T81N, R27W.

*This document was prepared by Dan Corbin, Inc. on March 9, 2018 for Dallas County, Iowa.*