

Dallas County, Iowa

Horizontal Datum: **NAD 83(NA2011)** - Vertical Datum: **NAVD 1988**
Iowa State Plane South Zone (1402)
Iowa Regional Coordinate System, Zone 8, Ames-Des Moines TM
US Survey Feet
2018

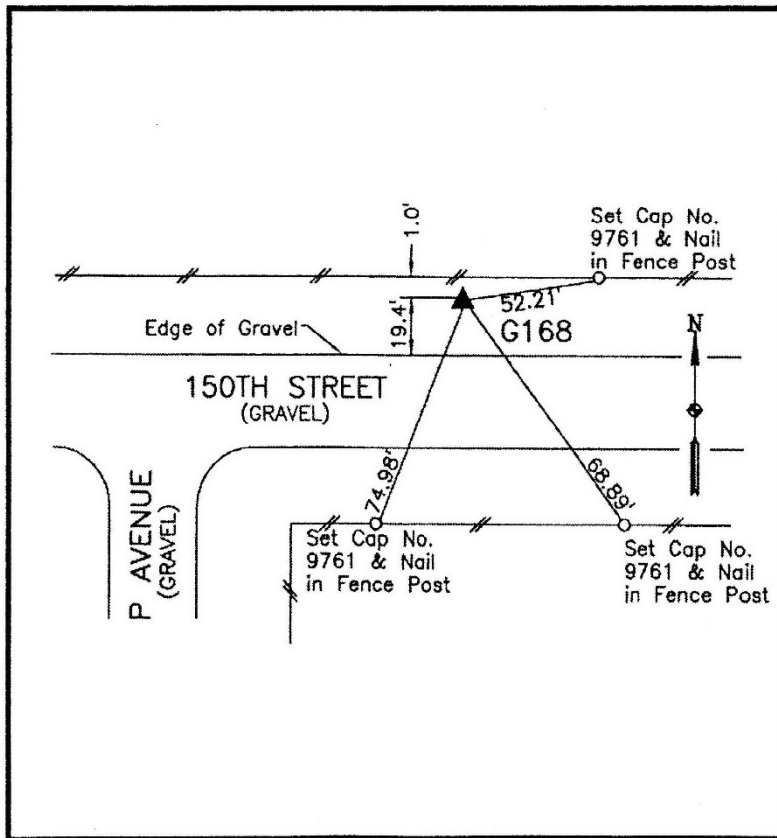
Point Name: **168 (Reset by DCI in 2017)**
Designation: G168 (set by WHKS in 2001)

NAD 83(NA2011) Latitude: **N41°49'14.25274"** Longitude: **W93°59'19.30339"**
NAVD 88 Ortho Height: **961.177sft** Ellip. Ht: **864.794sft** Geoid**12B**

Iowa South Zone (1402) Northing: **663709.687sft** Easting: **1507207.095sft**
Mapping Angle: **-0°19'19"** Combination Scale Factor: **0.99996557**

IaRCS Zone 8 Northing: **7572396.328sft** Easting: **18425847.503sft**
Mapping Angle: **-0°10'53"** Combination Scale Factor: **0.99999802**

Monument Type: 5/8" dia. x 6'-0" long alum. rod with cap and NGS style access cover.



Description:

Placed 5/8" X 6' - 0" Long
Aluminum Rod with Cap
Stamped G168 and NGS Style
Access Cover 1" Deep.

Location:

North side 150th Street just
west of P Avenue in Section
15, T81N, R27W.

This document was prepared by Dan Corbin, Inc. on March 9, 2018 for Dallas County, Iowa.