

Dallas County, Iowa

Horizontal Datum: **NAD 83(NA2011)** - Vertical Datum: **NAVD 1988**
Iowa State Plane South Zone (1402)
Iowa Regional Coordinate System, Zone 8, Ames-Des Moines TM
US Survey Feet
2018

Point Name: **169**

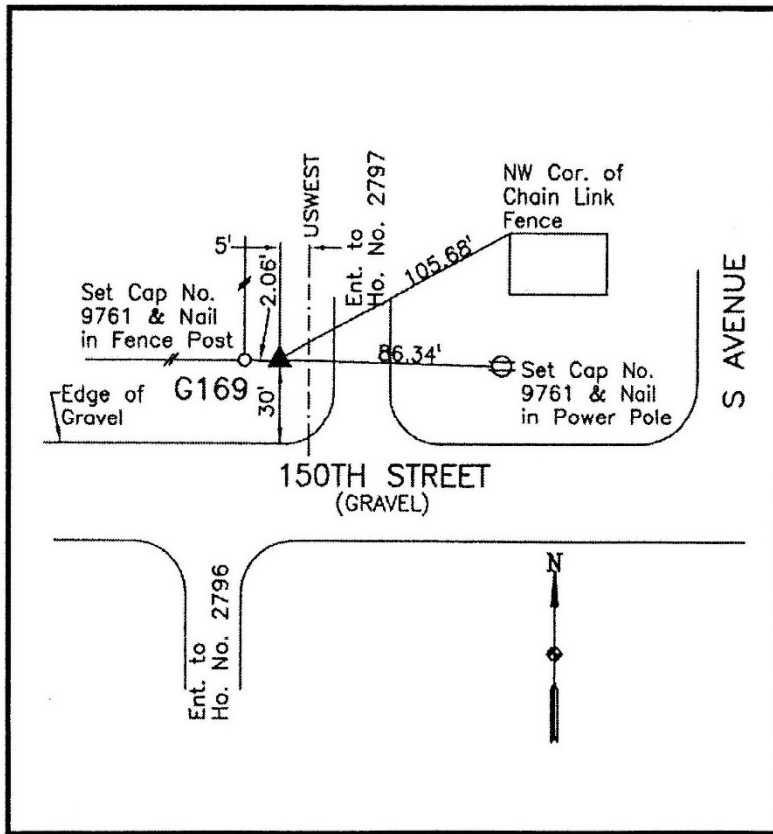
Designation: G169 (set by WHKS in 2001)

NAD 83(NA2011) Latitude: **N41°49'14.52768"** Longitude: **W93°55'54.04425"**
NAVD 88 Ortho Height: **915.905sft** Ellip. Ht: **818.617sft** **Geoid12B**

Iowa South Zone (1402) Northing: **663655.294sft** Easting: **1522748.750sft**
Mapping Angle: **-0°17'04"** Combination Scale Factor: **0.99996779**

IaRCS Zone 8 Northing: **7572380.112sft** Easting: **18441389.730sft**
Mapping Angle: **-0°08'36"** Combination Scale Factor: **0.99999786**

Monument Type: 5/8" dia. x 6'-0" long alum. rod with cap and NGS style access cover.



Description:

Placed 5/8" X 6' - 0" Long
Aluminum Rod with Cap
Stamped G169 and NGS Style
Access Cover 2 " Deep.

Location:

North side 150th Street just
west of S Avenue near west
fence at address 2797 150th
Street in Section 13, T81N,
R27W.