

Dallas County, Iowa

Horizontal Datum: **NAD 83(NA2011)** - Vertical Datum: **NAVD 1988**
Iowa State Plane South Zone (1402)
Iowa Regional Coordinate System, Zone 8, Ames-Des Moines TM
US Survey Feet
2018

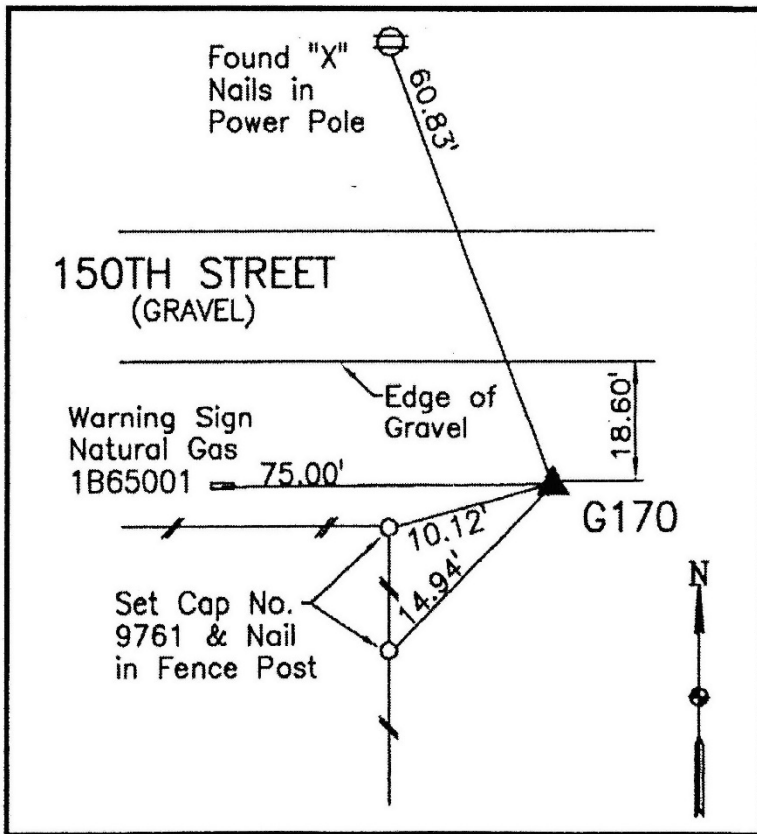
Point Name: **170 (Reset by DCI in 2017)**
Designation: G170 (set by WHKS in 2001)

NAD 83(NA2011) Latitude: **N41°49'13.70485"** Longitude: **W93°52'24.26684"**
NAVD 88 Ortho Height: **1015.539sft** Ellip. Ht: **917.415sft** Geoid12B

Iowa South Zone (1402) Northing: **663498.497sft** Easting: **1538632.051sft**
Mapping Angle: **-0°14'45"** Combination Scale Factor: **0.99996303**

IaRCS Zone 8 Northing: **7572262.459sft** Easting: **18457273.831sft**
Mapping Angle: **-0°06'16"** Combination Scale Factor: **0.99999131**

Monument Type: 5/8" dia. x 6'-0" long alum. rod with cap and NGS style access cover.



Description:

Placed 5/8" X 6' - 0" Long Aluminum Rod with Cap Stamped G170 and NGS Style Access Cover 1" Deep.

Location:

South side 150th Street near fence corner 75 feet east of Northern Natural Gas pipeline IB 65001, mile post 18.25 in Section 22, T81N, R26W.