

Dallas County, Iowa

Horizontal Datum: **NAD 83(NA2011)** - Vertical Datum: **NAVD 1988**
Iowa State Plane South Zone (1402)
Iowa Regional Coordinate System, Zone 8, Ames-Des Moines TM
US Survey Feet
2018

Point Name: **171**

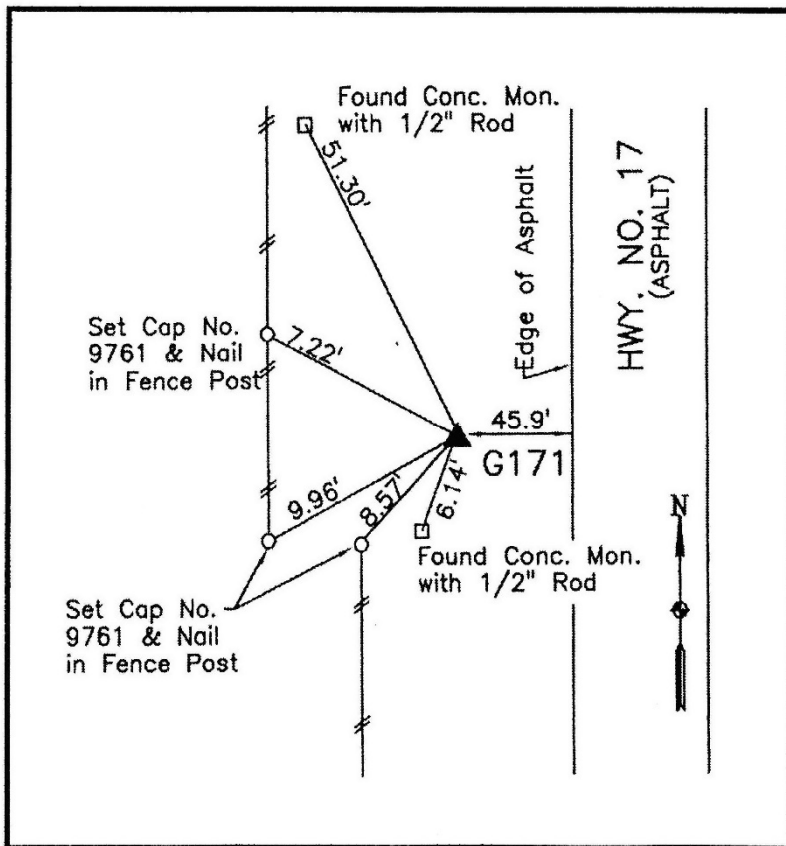
Designation: G171 (set by WHKS in 2001)

NAD 83(NA2011) Latitude: **N41°49'12.94824"** Longitude: **W93°48'55.28399"**
NAVD 88 Ortho Height: **936.161sft** Ellip. Ht: **837.258sft** **Geoid12B**

Iowa South Zone (1402) Northing: **663359.262sft** Easting: **1554455.370sft**
Mapping Angle: **-0°12'28"** Combination Scale Factor: **0.99996682**

IaRCS Zone 8 Northing: **7572162.350sft** Easting: **18473097.883sft**
Mapping Angle: **-0°03'57"** Combination Scale Factor: **0.99999388**

Monument Type: 5/8" dia. x 6'-0" long alum. rod with cap and NGS style access cover.



Description:

Placed 5/8" X 6' - 0" Long Aluminum Rod with Cap Stamped G170 and NGS Style Access Cover 1" Deep.

Location:

South side 150th Street near fence corner 75 feet east of Northern Natural Gas pipeline IB 65001, mile post 18.25 in Section 22, T81N, R26W.

This document was prepared by Dan Corbin, Inc. on March 9, 2018 for Dallas County, Iowa.